

alaska

cruisetours

the best way to see denali



The best way to see the heart of Alaska is on a Princess® cruisetour, which combines a seven-day Voyage of the Glaciers cruise, scenic rail travel and multiple days touring Alaska by land with stays at Princess-owned wilderness lodges. You can cruise first or start with a land tour. There are options for every taste and activity level.

northbound cruisetour

or

southbound cruisetour

Start with glaciers and frontier towns on a 7-day Voyage of the Glaciers cruise



Enjoy scenic travel via exclusive Direct-to-the-Wilderness® rail service



Spend three or more nights on land at Princess Wilderness Lodges



Start with three or more nights on land at Princess Wilderness Lodges



Travel by exclusive Princess Direct-to-the-Wilderness® rail service



End with a 7-day Voyage of the Glaciers cruise to see glaciers and frontier towns



*Lead-in fares are based on the lowest category stateroom for each category type. Launch Fares represent the lead-in introductory fares and are subject to change. Launch Fares and other amounts are in HK dollars unless stated otherwise and are available in Hong Kong only. Rates shown are per person, cruise or cruisetour only, based on double occupancy and do not apply to singles or third- and fourth-berth guests; contact Princess Cruises for third- and fourth-berth guest fares. Refer to princess.com for information and fares for oceanview cabins. This offer is based on space availability, is capacity controlled and applies to the sailing dates and stateroom categories shown on each itinerary. Fares may remain at a discounted level after this promotion. See princess.com for terms, conditions and definitions that apply to all bookings.

travel by rail



direct-to-the-wilderness®



No other cruise line offers it — Direct-to-the-Wilderness® rail service from your ship to our Denali-area lodges. You'll be whisked through some of Alaska's most beautiful wilderness — miles and miles of pure majesty as you cross bridges, span meadows and glide along mountain ranges in comfortable train cars. Step out onto observation platforms for fabulous views of picturesque valleys along the way to your overnight accommodations at Princess Wilderness Lodges, conveniently located on the doorsteps of Alaska's legendary national parks.

Rail travel is a highlight of all cruisetours, carrying you through some of Alaska's most spectacular scenery as you travel the original route of the Alaska Railroad.



LOOK FOR

the Direct-to-the-Wilderness® rail symbol for itineraries featuring this exclusive service between our ships and our Denali-area lodges.



ALSO LOOK FOR

the Princess Rail symbol for itineraries including this service. It features beautiful Alaska scenery, plus our warm Princess service.

stay overnight at wilderness lodges



Princess wilderness lodges

denali Princess wilderness lodge®

The Denali Princess Wilderness Lodge is the ideal spot for adventures into Denali National Park. [page 4](#)

mt. mckinley Princess wilderness lodge®

Mt. McKinley Princess Wilderness Lodge is a true wilderness retreat with spectacular views of one of Alaska's main attractions: Denali. [page 5](#)

copper river Princess wilderness lodge®

Just four miles from Wrangell-St. Elias National Park, this comfy lodge offers a host of outdoor activities so you can explore the area. [page 6](#)

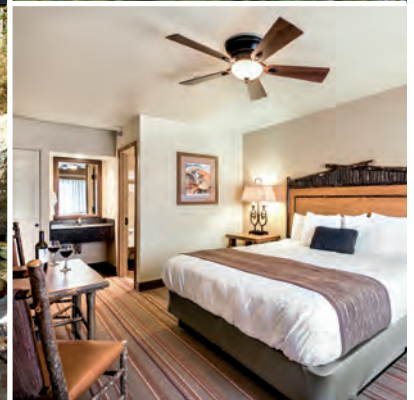
kenai Princess wilderness lodge®

The perfect mix of tranquility and adventure characterizes your Kenai lodging experience. [page 7](#)

denali

Princess wilderness lodge®

a base for adventure



Just one mile outside the main entrance to Denali National Park is the Denali Princess Wilderness Lodge®, the perfect home base for exploring the wonders of one of Alaska’s greatest parks. Set idyllically above the picturesque Nenana River with sweeping views of the surrounding wilderness, this comfortable campus-style lodge offers an array of amenities and a helpful tour desk that can assist you in planning adventures into the park. A daily shuttle service can take you to the Denali National Park Visitor Center, the Wilderness Access Center and Horseshoe Lake.

ADVENTURES GALORE

Take advantage of your proximity to Denali with a variety of tours that allow you to explore the park. A Natural History Tour is included in most cruisetours or upgrade to the more in-depth Tundra Wilderness Tour.

AT THE LODGE

There’s something for every mood — enjoy a coffee by the fireplace in the main lodge, a glass of wine out on an expansive deck overlooking the Nenana River, or a casual stroll among the shops and restaurants.

A TASTE OF DENALI

Step into the casually elegant King Salmon restaurant for some fresh Alaska seafood or the Grizzly Bar & Grill for something a bit more casual. There’s also pizza at Lynx Creek Pizza or pastries and coffee at River Run Espresso.

OPPOSITE PAGE, CLOCKWISE FROM LEFT: View of Denali from Mt. McKinley Princess Wilderness Lodge; encounter a variety of wildlife, perhaps even a moose; Denali Princess Wilderness Lodge.

THIS PAGE, CLOCKWISE FROM LEFT: Denali Princess Wilderness Lodge; Nenana River; relax in your comfortable guestroom.

mt. mckinley

Princess wilderness lodge®

at denali's doorstep



At the Mt. McKinley Princess Wilderness Lodge®, you'll be awed by spectacular views of Denali — known as Mt. McKinley until restored to its original Athabascan name in 2015. This lodge, located in Denali State Park just 40 miles from North America's tallest peak, has it all — idyllic walking trails, broad viewing decks, cozy outdoor firepits and couches by roaring fires in the main lodge. Its remote location makes it the perfect setting for enjoying mountain vistas and Alaska's wild splendors.

MOUNTAIN MAJESTY

Sit and gaze at the majesty of "The Great One" from the deck or while roasting a marshmallow at the fireside patio. Mountain climbers give presentations in our new Hudson Theater and share stories about their climbs.

HOME, SWEET HOME

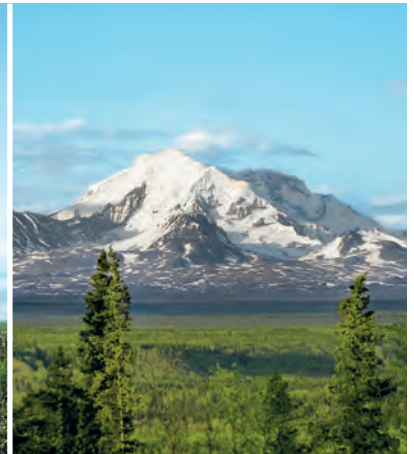
In addition to the idyllic setting and comfortable guest rooms, enjoy dining in the sophisticated Mountain View Dining Room or casual options like 20,320 Alaskan Grill, Base Camp Bar and Coffee Bruin Espresso.

THE GREAT OUTDOORS

While the vistas at the lodge are beautiful, you'll want to get out and experience the outdoors with an excursion. Choose from options including river rafting, glacier landings and fishing.

copper river Princess wilderness lodge®

spectacular wilderness retreat



Six times the size of Yellowstone, sprawling Wrangell-St. Elias National Park is America's largest national park, a sight to behold. And there's no better location to see it from than Copper River Princess Wilderness Lodge®. With architecture inspired by the nearby Kennicott copper mine, the lodge overlooks the lovely Copper River, with all the comforts you would expect from Princess. Even getting there is an adventure, with awe-inspiring scenery along the Denali Highway or in Prince William Sound via high-speed catamaran.

REST AND RELAXATION

In the comfy Wrangell Room, you can relax by a warm fire. You'll discover great views on the trails around the lodge's scenic grounds, and daily shuttle service can deliver you to the park's Wrangell-St. Elias Visitor Center & Ahtna Cultural Center.

LOCAL FLAVORS

Sample delicious Copper River salmon straight from the very waters the lodge looks out on at Two Rivers Restaurant. More relaxed dining is available at casual venues, like the Whistle Stop Bar & Grill and Dragonfly Espresso.

ADVENTURES FROM THE LODGE

The options for adventure are many — salmon fishing, river rafting, kayaking in Prince William Sound, glacier cruising, jet boating and hiking.

OPPOSITE CLOCKWISE FROM TOP LEFT: Enjoying the views on deck; Mt. McKinley Princess Wilderness Lodge; fireside patio; views of Denali. THIS PAGE CLOCKWISE FROM LEFT: Copper River Princess Wilderness Lodge; the splendor of Wrangell-St. Elias National Park; fishing excursion.

kenai

Princess wilderness lodge®

scenic river surrounds



To those who live in the Great Land, it's known as "Alaska's Playground" — because the Kenai Peninsula is where Alaskans come to get away. And you'll discover all its dazzling allure from the rustic Kenai Princess Wilderness Lodge®, named one of the top 12 resorts in Alaska and the Pacific Northwest by readers of *Condé Nast Traveler*. The main attraction is nearby Kenai Fjords National Park, a 690,000-acre wonderland with incredible tidewater glaciers.

LODGE LIFE

Evoking the great wilderness lodges of lore, the Kenai lodge has bungalow-style rooms, each offering its own porch and wood-burning stove. Settle with a book by the fireplace in the main lodge, or take a glass of wine out on the expansive deck.

OUT AND ABOUT

Outdoor pleasures abound at the Kenai Princess Wilderness Lodge® — including day cruises in Kenai Fjords National Park, as well as some of Alaska's best angling on the Kenai River.

ALASKA APPETITE

Delectable dining at the lodge can be found with refined Alaska-inspired cuisine at the elegant Eagles Crest Restaurant and casual fare, beer and cocktails at the more casual Rafter's Lounge.

cruisetours

Princess has a diverse group of cruisetours, combining the best of land and sea, that lets you see Alaska your way. The following pages will help you narrow down your choices, and you can see the full details starting on page 12.

denali explorer

cruisetours pages 12-23

It's our most popular cruisetour type — Denali Explorer. Choose from a variety of options to match your interests, each offering a 7-day Voyage of the Glaciers cruise with 3 to 6 nights on land. All itineraries feature a Natural History Tour into Denali National Park, plus a Sternwheeler Riverboat Cruise and a Gold Dredge 8 Tour in Fairbanks (if applicable).



on your own

cruisetours pages 14, 15, 17

Our On Your Own cruisetours are the perfect option for the independent-minded traveler. Three to four nights on land, without prescheduled sightseeing activities, allow you to customize how you want to spend your free time.

off the beaten path

cruisetours pages 24-27

With our Off the Beaten Path cruisetours, you'll experience the best features of our Denali Explorer vacations plus time at our remote Princess® Wilderness Lodges located on the Kenai Peninsula near dazzling Kenai Fjords National Park or Copper River just outside Wrangell-St. Elias National Park.



connoisseur

cruisetours pages 28-34

Hosted by a tour director, with most meals included and enhanced sightseeing, these vacations feature the highest level of service. Enjoy five to eight nights on land, visiting not only Denali but also other legendary locales, such as Copper River and/or the Kenai Peninsula.

OPPOSITE PAGE CLOCKWISE FROM TOP: The Kenai River; Kenai Princess Wilderness Lodge; taking in the views. THIS PAGE CLOCKWISE FROM TOP LEFT: Denali National Park; Black bear; flightseeing excursion; Kenai Fjords.

denali explorer and on your own

cruisetours

Nights — 1-7 — 8 — 9 — 10 —

A 10 nights

Voyage of the Glaciers cruise

1 night Denali Princess Wilderness Lodge Natural History Tour

1 night Mt. McKinley Princess Wilderness Lodge

1 night Anchorage

Interior fares from* **HK\$11,303**

Balcony fares from* **HK\$17,933**

*AA3 fares based on 5/9/18 departure on Coral Princess® Taxes, Fees and Port Expenses of up to HK\$2,028 are additional and subject to change. See page 13 for full itinerary details.

Nights — 1-7 — 8 — 9 — 10 —

B 10 nights

Voyage of the Glaciers cruise

1 night Mt. McKinley Princess Wilderness Lodge

1 night Denali Princess Wilderness Lodge Natural History Tour

1 night Fairbanks Sternwheeler Riverboat Cruise

Interior fares from* **HK\$11,537**

Balcony fares from* **HK\$18,167**

ON YOUR OWN ALSO AVAILABLE* FARES FROM HK\$9,977* TOUR BBX

*BA3 fares based on 5/9/18 departure on Coral Princess® Taxes, Fees and Port Expenses of up to HK\$1,950 are additional and subject to change. See page 14 for full itinerary details.

Nights — 1-7 — 8 — 9 + 10 —

C 10 nights

Voyage of the Glaciers cruise

1 night Denali Princess Wilderness Lodge Natural History Tour

2 nights Fairbanks Sternwheeler Riverboat Cruise & Gold Dredge 8 Tour

Interior fares from* **HK\$10,757**

Balcony fares from* **HK\$17,387**

ON YOUR OWN ALSO AVAILABLE* FARES FROM HK\$8,807* TOUR CAX & CBX

*CA3 fares based on 5/9/18 departure on Coral Princess® Taxes, Fees and Port Expenses of up to HK\$1,989 are additional and subject to change. See page 15 for full itinerary details.

Nights — 1-7 — 8 + 9 — 10 —

D 10 nights

Voyage of the Glaciers cruise

2 nights Denali Princess Wilderness Lodge Natural History Tour

1 night Fairbanks Sternwheeler Riverboat Cruise

Interior fares from* **HK\$11,693**

Balcony fares from* **HK\$19,493**

*DA3 fares based on 5/12/18 departure on Star Princess® Taxes, Fees and Port Expenses of up to HK\$1,989 are additional and subject to change. See page 16 for full itinerary details.

Nights — 1-7 — 8 + 9 — 10 — 11 —

E 11 nights

Voyage of the Glaciers cruise

2 nights Denali Princess Wilderness Lodge Natural History Tour

1 night Mt. McKinley Princess Wilderness Lodge

1 night Anchorage

Interior fares from* **HK\$12,707**

Balcony fares from* **HK\$19,337**

ON YOUR OWN ALSO AVAILABLE* FARES FROM HK\$11,147* TOUR EBX

*EA4 fares based on 5/9/18 departure on Coral Princess® Taxes, Fees and Port Expenses of up to HK\$2,067 are additional and subject to change. See page 17 for full itinerary details.

Nights — 1-7 — 8 — 9 + 10 — 11 —

F 11 nights

Voyage of the Glaciers cruise

1 night Mt. McKinley Princess Wilderness Lodge

2 nights Denali Princess Wilderness Lodge Natural History Tour

1 night Fairbanks Sternwheeler Riverboat Cruise

Interior fares from* **HK\$12,863**

Balcony fares from* **HK\$19,493**

*FA4 fares based on 5/9/18 departure on Coral Princess® Taxes, Fees and Port Expenses of up to HK\$1,989 are additional and subject to change. See page 18 for full itinerary details.

Nights — 1-7 — 8 + 9 — 10 + 11 —

G 11 nights

Voyage of the Glaciers cruise

2 nights Denali Princess Wilderness Lodge Natural History Tour

2 nights Fairbanks Sternwheeler Riverboat Cruise & Gold Dredge 8 Tour

Interior fares from* **HK\$12,473**

Balcony fares from* **HK\$19,103**

*GA4 fares based on 5/9/18 departure on Coral Princess® Taxes, Fees and Port Expenses of up to HK\$2,028 are additional and subject to change. See page 19 for full itinerary details.

Nights — 1-7 ————— 8 + 9 ————— 10 + 11 ————— 12 —

H 12 nights

Voyage of the Glaciers cruise

2 nights Denali Princess Wilderness Lodge
Natural History Tour

2 nights Mt. McKinley Princess Wilderness Lodge

1 night Anchorage

Interior fares from* **HK\$13,799**
Balcony fares from* **HK\$20,429**

*HA5 fares based on 5/9/18 departure on Coral Princess® Taxes, Fees and Port Expenses of up to HK\$2,067 are additional and subject to change. See page 20 for full itinerary details.

Nights — 1-7 ————— 8 + 9 ————— 10 + 11 ————— 12 —

I 12 nights

Voyage of the Glaciers cruise

2 nights Mt. McKinley Princess Wilderness Lodge

2 nights Denali Princess Wilderness Lodge
Natural History Tour

1 night Fairbanks
Sternwheeler Riverboat Cruise

Interior fares from* **HK\$13,643**
Balcony fares from* **HK\$20,273**

*IA5 fares based on 5/9/18 departure on Coral Princess® Taxes, Fees and Port Expenses of up to HK\$2,028 are additional and subject to change. See page 21 for full itinerary details.

Nights — 1-7 ————— 8 ————— 9 ————— 10 ————— 11 + 12 —

J 12 nights

Voyage of the Glaciers cruise

1 night Anchorage

1 night Mt. McKinley Princess Wilderness Lodge

1 night Denali Princess Wilderness Lodge
Natural History Tour

2 nights Fairbanks
Sternwheeler Riverboat Cruise & Gold Dredge 8 Tour

Interior fares from* **HK\$12,629**
Balcony fares from* **HK\$19,259**

*JA5 fares based on 5/9/18 departure on Coral Princess® Taxes, Fees and Port Expenses of up to HK\$2,106 are additional and subject to change. See page 22 for full itinerary details.

Nights — 1-7 ————— 8 + 9 ————— 10 + 11 ————— 12 + 13 —

K 13 nights

Voyage of the Glaciers cruise

2 nights Mt. McKinley Princess Wilderness Lodge

2 nights Denali Princess Wilderness Lodge
Natural History Tour

2 nights Fairbanks
Sternwheeler Riverboat Cruise

Interior fares from* **HK\$14,189**
Balcony fares from* **HK\$20,819**

*KA6 fares based on 5/9/18 departure on Coral Princess® Taxes, Fees and Port Expenses of up to HK\$2,067 are additional and subject to change. See page 23 for full itinerary details.

off the beaten path cruisetours

Nights — 1-7 ————— 8 + 9 ————— 10 + 11 ————— 12 ————— 13 —

L 13 nights

Voyage of the Glaciers cruise

2 nights Copper River Princess Wilderness Lodge

2 nights Denali Princess Wilderness Lodge
Natural History Tour

1 night Mt. McKinley Princess Wilderness Lodge

1 night Anchorage

Interior fares from* **HK\$15,203**
Balcony fares from* **HK\$23,003**

*LA6 fares based on 5/19/18 departure on Golden Princess® Taxes, Fees and Port Expenses of up to \$2,067 are additional and subject to change. See page 25 for full itinerary details.

Nights — 1 ————— 2 + 3 ————— 4 + 5 ————— 6 ————— 7 ————— 8-14 —

M 14 nights

1 night Anchorage

2 nights Copper River Princess Wilderness Lodge

2 nights Fairbanks
Sternwheeler Riverboat Cruise & Gold Dredge 8 Tour

1 night Denali Princess Wilderness Lodge
Natural History Tour

1 night Mt. McKinley Princess Wilderness Lodge

Voyage of the Glaciers cruise

Interior fares from* **HK\$16,763**
Balcony fares from* **HK\$24,173**

*MB7 fares based on 5/19/18 departure on Golden Princess® Taxes, Fees and Port Expenses of up to HK\$2,106 are additional and subject to change. See page 26 for full itinerary details.

Nights — 1-7 ————— 8 + 9 ————— 10 ————— 11 + 12 ————— 13 + 14 —

N 14 nights

Voyage of the Glaciers cruise

2 nights Kenai Princess Wilderness Lodge

1 night Mt. McKinley Princess Wilderness Lodge

2 nights Denali Princess Wilderness Lodge
Natural History Tour

2 nights Fairbanks
Sternwheeler Riverboat Cruise & Gold Dredge 8 Tour

Interior fares from* **HK\$15,749**
Balcony fares from* **HK\$23,549**

*NA7 fares based on 5/12/18 departure on Star Princess® Taxes, Fees and Port Expenses of up to HK\$2,106 are additional and subject to change. See page 27 for full itinerary details.

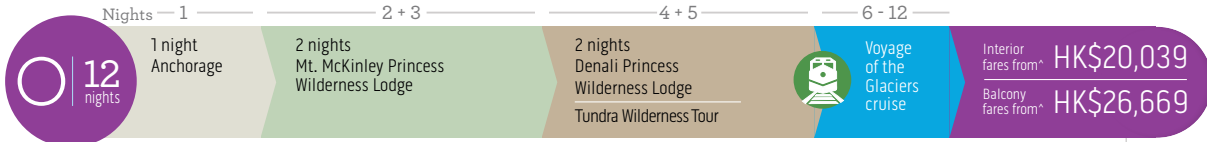
connoisseur cruisetours



LOOK FOR the Direct-to-the-Wilderness® rail symbol for itineraries featuring this exclusive service between our ships and our Denali-area lodges.



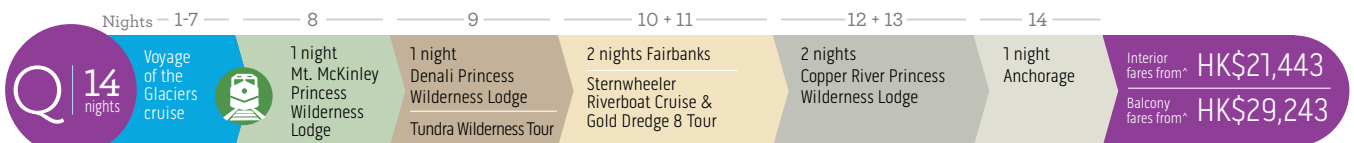
ALSO LOOK FOR the Princess Rail symbol for itineraries including this service. It features beautiful Alaska scenery, plus our warm Princess service.



*OB5 fares based on 5/11/18 departure on Coral Princess® Taxes, Fees and Port Expenses of up to HK\$2,067 are additional and subject to change. See page 29 for full itinerary details.



*PA6 fares based on 5/9/18 departure on Coral Princess® Taxes, Fees and Port Expenses of up to HK\$2,067 are additional and subject to change. See page 30 for full itinerary details.



*QA7 fares based on 5/12/18 departure on Star Princess® Taxes, Fees and Port Expenses of up to HK\$1,943 are additional and subject to change. See page 31 for full itinerary details.

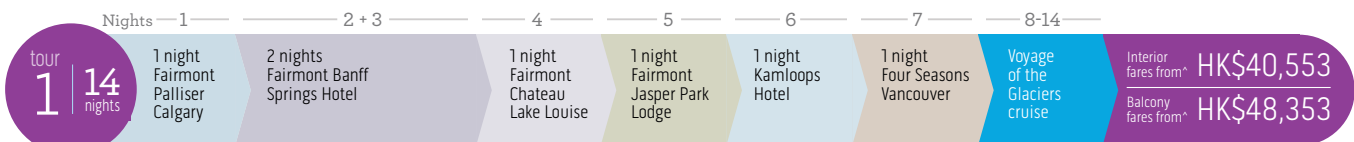


*RB8 fares based on 5/8/18 departure on Coral Princess® Taxes, Fees and Port Expenses of up to HK\$2,184 are additional and subject to change. See page 32 for full itinerary details.



*SA8 fares based on 5/19/18 departure on Golden Princess® Taxes, Fees and Port Expenses of up to HK\$2,028 are additional and subject to change. See page 33 for full itinerary details.

canadian rockies cruisetour



*1A fares based on 5/5/18 departure on Star Princess® Taxes, Fees and Port Expenses of up to HK\$2,418 are additional and subject to change. See page 34 for full itinerary details.

Alaska

- Anchorage
- Mt. McKinley Princess Wilderness Lodge
- Denali Princess Wilderness Lodge
- Fairbanks
- Copper River Princess Wilderness Lodge
- Kenai Princess Wilderness Lodge

Canadian Rockies

- Fairmont Palliser Calgary
- Fairmont Banff Springs Hotel
- Fairmont Chateau Lake Louise
- Fairmont Jasper Park Lodge
- Kamloops Hotel
- Four Seasons Vancouver

*On Your Own cruisetour options do not include Direct-to-the-Wilderness rail service, Natural History Tour into Denali National Park, Sternwheeler Riverboat Cruise or Gold Dredge 8 Tour in Fairbanks.

denali explorer cruisetour itineraries



It's our most popular cruisetour type — Denali Explorer. Choose from a variety of options to match your interests, each offering a seven-day Voyage of the Glaciers cruise with three to six nights on land. All itineraries feature a Natural History Tour into Denali National Park.

- Seven-day Voyage of the Glaciers cruise
- Stays at authentic Princess Wilderness Lodges
- Exclusive Direct-to-the-Wilderness® rail service on most itineraries
- Up to four nights in our Denali-area lodges
- Options to Fairbanks and/or Anchorage
- Natural History Tour into Denali National Park (option to upgrade to Tundra Wilderness Tour at an additional cost)
- Sternwheeler Riverboat Cruise and Gold Dredge 8 Tour in Fairbanks (if applicable)



LOOK FOR

the Direct-to-the-Wilderness® rail symbol for itineraries featuring this exclusive service between our ships and our Denali-area lodges.



ALSO LOOK FOR

the Princess Rail symbol for itineraries including this service. It features beautiful Alaska scenery, plus our warm Princess service.

tour
A

10
nights

Denali Explorer



TOUR AB3 LAND before CRUISE

DAY	DESTINATION
By Land 1	Anchorage – Explore the surprisingly metropolitan city of Anchorage by getting out to see the shops, restaurants and cultural attractions. Overnight at Hotel Captain Cook.
2	Anchorage/Mt. McKinley – Travel via motorcoach to Mt. McKinley Princess Wilderness Lodge, where the views are incredible. Relish in the many amenities our lodge has to offer. Overnight at Mt. McKinley Princess Wilderness Lodge.
3	Mt. McKinley/Denali – This morning, enjoy a scenic motorcoach ride to Denali Princess Wilderness Lodge, just steps from Denali National Park. Take in an afternoon Natural History Tour to learn more about the park. Overnight at Denali Princess Wilderness Lodge.
4	Denali/Whittier/Embark Ship – Enjoy a scenic rail journey through some of the best wilderness on the Direct-to-the-Wilderness® rail toward Whittier, where your cruise ship awaits.
By Sea	Southbound Voyage of the Glaciers Cruise
5	Cruising Hubbard Glacier
6	Cruising Glacier Bay National Park
7	Skagway
8	Juneau
9	Ketchikan
10	Cruising the Inside Passage
11	Vancouver, B.C., Canada



OR enjoy this cruisetour in reverse with your land tour after your cruise:

TOUR AA3 LAND after CRUISE

- DAY 1 Vancouver, B.C., Canada
- DAY 2 Cruising the Inside Passage
- DAY 3 Ketchikan*
- DAY 4 Juneau
- DAY 5 Skagway
- DAY 6 Cruising Glacier Bay National Park
- DAY 7 Cruising College Fjord
- DAY 8 Disembark Ship/Whittier/Denali
- DAY 9 Denali/Mt. McKinley
- DAY 10 Mt. McKinley/Anchorage
- DAY 11 Fly home from Anchorage

2018 DEPARTURES

TOUR AB3 LAND before CRUISE

Anchorage to Vancouver, B.C.

Coral Princess®

May 13, 27 6813, 6815 Jul 8, 22 6821, 6823 Sep 2 6829
Jun 10, 24 6817, 6819 Aug 5, 19 6825, 6827

Star Princess®

May 16, 30 9813, 9815 Jul 11, 25 9821, 9823 Sep 5 9829
Jun 13, 27 9817, 9819 Aug 8, 22 9825, 9827

Island Princess®

May 20 2810 Jul 1, 15, 29 Aug 12, 26 2822, 2824
Jun 3, 17 2812, 2814 2816, 2818, 2820 Sep 9 2826

Interior fares from* **HK\$12,707** Balcony fares from* **HK\$19,337**

TOUR AA3 LAND after CRUISE

Vancouver, B.C. to Anchorage

Coral Princess®

May 9, 23 6812, 6814 Jul 4, 18 6820, 6822
Jun 6, 20 6816, 6818 Aug 1, 15, 29 6824, 6826, 6828

Star Princess®

May 12, 26 9812, 9814 Jul 7, 21 9820, 9822 Sep 1 9828
Jun 9, 23 9816, 9818 Aug 4, 18 9824, 9826

Golden Princess®

May 19 5814 Jul 14, 28 5822, 5824 Aug 11, 25 5826, 5828
Jun 2, 16, 30 5816, 5818, 5820

Island Princess®

May 16, 30 2809, 2811 Jul 11, 25 2817, 2819 Sep 5 2825
Jun 13, 27 2813, 2815 Aug 8, 22 2821, 2823

Interior fares from* **HK\$11,303** Balcony fares from* **HK\$17,933**

*AA3 fares based on 5/9/18 departure on Coral Princess; AB3 fares based on 5/13/18 departure on Coral Princess. Fares for other dates may vary. Taxes, Fees, and Port Expenses of up to HK\$2,028 are additional and subject to change. See page 1 for more details.

*Icy Strait Point replaces Ketchikan on Island Princess® cruises.

tour
B

10
nights

Denali Explorer



TOUR BB3 LAND before CRUISE

DAY	DESTINATION
By Land	
1	Fairbanks – Alaska’s “Golden Heart City” of Fairbanks is a great introduction to the heart of this unique state. Overnight at a Fairbanks hotel.
2	Fairbanks/Denali – Enjoy a Sternwheeler Riverboat Cruise before heading via motorcoach for Denali National Park and Denali Princess Wilderness Lodge — your first of two destinations in the Denali area. Overnight at Denali Princess Wilderness Lodge.
3	Denali/Mt. McKinley – Your morning begins with a Natural History Tour into Denali National Park. Then, take a scenic motorcoach ride to your second of two destinations in Denali, Mt. McKinley Princess Wilderness Lodge. Overnight at Mt. McKinley Princess Wilderness Lodge.
4	Mt. McKinley/Whittier/Embark Ship – Our Direct-to-the-Wilderness rail service takes you on a scenic rail journey through some of the best wilderness as you head toward Whittier, where your cruise ship awaits.
By Sea	Southbound Voyage of the Glaciers Cruise
5	Cruising Hubbard Glacier
6	Cruising Glacier Bay National Park
7	Skagway
8	Juneau
9	Ketchikan
10	Cruising the Inside Passage
11	Vancouver, B.C., Canada



OR enjoy this cruisetour in reverse with your land tour after your cruise:

TOUR BA3 LAND after CRUISE

- DAY 1 Vancouver, B.C., Canada
- DAY 2 Cruising the Inside Passage
- DAY 3 Ketchikan*
- DAY 4 Juneau
- DAY 5 Skagway
- DAY 6 Cruising Glacier Bay National Park
- DAY 7 Cruising College Fjord
- DAY 8 Disembark Ship/Whittier/Mt. McKinley
- DAY 9 Mt. McKinley/Denali
- DAY 10 Denali/Fairbanks
- DAY 11 Fly home from Fairbanks

2018 DEPARTURES

TOUR BB3 LAND before CRUISE

Fairbanks to Vancouver, B.C.

Golden Princess®

May 9, 23 5813, 5815 Jul 4, 18 5821, 5823
Jun 6, 20 5817, 5819 Aug 1, 15, 29 5825, 5827, 5829

Star Princess®

May 16, 30 9813, 9815 Jul 11, 25 9821, 9823 Sep 5 9829
Jun 13, 27 9817, 9819 Aug 8, 22 9825, 9827

Interior fares from* **HK\$12,473** Balcony fares from* **HK\$20,273**

TOUR BA3 LAND after CRUISE

Vancouver, B.C. to Fairbanks

Coral Princess®

May 9, 23 6812, 6814 Jul 4, 18 6820, 6822
Jun 6, 20 6816, 6818 Aug 1, 15, 29 6824, 6826, 6828

Golden Princess®

May 19 5814 Jul 14, 28 5822, 5824 Aug 11, 25 5826, 5828
Jun 2, 16, 30 5816, 5818, 5820

Island Princess®

May 16, 30 2809, 2811 Jul 11, 25 2817, 2819 Sep 5 2825
Jun 13, 27 2813, 2815 Aug 8, 22 2821, 2823

Star Princess®

May 12, 26 9812, 9814 Jul 7, 21 9820, 9822 Sep 1 9828
Jun 9, 23 9816, 9818 Aug 4, 18 9824, 9826

Interior fares from* **HK\$11,537** Balcony fares from* **HK\$18,167**

*BA3 fares based on 5/9/18 departure on Coral Princess® BB3 fares based on 5/9/18 departure on Golden Princess®. Fares for other dates may vary. Taxes, Fees, and Port Expenses of up to HK\$1,950 are additional and subject to change. See page 1 for more details.

*On Your Own cruisetour options do not include Direct-to-the-Wilderness rail service, Natural History Tour into Denali National Park, Sternwheeler Riverboat Cruise or Gold Dredge 8 Tour in Fairbanks.

*Icy Strait Point replaces Ketchikan on Island Princess® cruises.

ON YOUR OWN

fares from HK\$9,977*

Ask about cruisetour **BBX** (land before cruise)

[For more details, visit princess.com](http://princess.com)

OPPOSITE PAGE: Potter Marsh wildlife viewing boardwalk in Anchorage.

THIS PAGE: Fireside Patio at the Mt. McKinley Princess Wilderness Lodge.

tour
C

10
nights

Denali Explorer



TOUR CB3 LAND before CRUISE

DAY	DESTINATION
By Land	
1	Fairbanks - Enjoy a wonderful beginning to your vacation in Alaska's "Golden Heart City." Get settled in to your hotel, explore the town a bit and get ready for the adventure ahead. Overnight at a Fairbanks hotel.
2	Fairbanks - A full day in Fairbanks gives you time to get a feel for the unique culture and history of the region. You'll also enjoy a visit to Gold Dredge 8, where you can pan for gold. Then, an authentic Sternwheeler Riverboat Cruise takes you to an Athabaskan fishing village and dog sled kennels. Overnight at a Fairbanks hotel.
3	Fairbanks/Denali - The journey by comfortable motorcoach to Denali Princess Wilderness Lodge® is spectacular. Once there, head into the park on a Natural History Tour. This evening, relax on the deck and enjoy stunning views of the Nenana River Canyon. Overnight at Denali Princess Wilderness Lodge.
4	Denali/Whittier/Embark Ship - Enjoy our Direct-to-the-Wilderness rail service through some of the best wilderness toward Whittier, where your cruise ship awaits.
By Sea	Southbound Voyage of the Glaciers Cruise
5	Cruising Hubbard Glacier
6	Cruising Glacier Bay National Park
7	Skagway
8	Juneau
9	Ketchikan
10	Cruising the Inside Passage
11	Vancouver, B.C., Canada



OR enjoy this cruisetour in reverse with your land tour after your cruise:

TOUR CA3 LAND after CRUISE

- DAY 1 Vancouver, B.C., Canada
- DAY 2 Cruising the Inside Passage
- DAY 3 Ketchikan*
- DAY 4 Juneau
- DAY 5 Skagway
- DAY 6 Cruising Glacier Bay National Park
- DAY 7 Cruising College Fjord
- DAY 8 Disembark Ship/Whittier/Denali
- DAY 9 Denali/Fairbanks
- DAY 10 Fairbanks
- DAY 11 Fly home from Fairbanks

2018 DEPARTURES

TOUR CB3 LAND before CRUISE

Fairbanks to Vancouver, B.C.

Golden Princess®

May 9, 23 5813, 5815 Jul 4, 18 5821, 5823

Jun 6, 20 5817, 5819 Aug 1, 15, 29 5825, 5827, 5829

Star Princess®

May 16, 30 9813, 9815 Jul 11, 25 9821, 9823 Sep 5 9829

Jun 13, 27 9817, 9819 Aug 8, 22 9825, 9827

Interior fares from* **HK\$11,303** Balcony fares from* **HK\$19,103**

TOUR CA3 LAND after CRUISE

Vancouver, B.C. to Fairbanks

Coral Princess®

May 9, 23 6813, 6815 Jul 4, 18 6821, 6823

Jun 6, 20 6817, 6819 Aug 1, 15, 29 6825, 6827, 6829

Island Princess®

May 16, 30 2810, 2812 Jul 11, 25 2818, 2820 Sep 5 2826

Jun 13, 27 2814, 2816 Aug 8, 22 2822, 2824

Interior fares from* **HK\$10,757** Balcony fares from* **HK\$17,387**

*CA3 fares based on 5/9/18 departure on Coral Princess® CB3 fares based on 5/9/18 departure on Golden Princess®. Fares for other dates may vary. Taxes, Fees, and Port Expenses of up to HK\$1,989 are additional and subject to change. See page 1 for more details.

*On Your Own cruisetour options do not include Direct-to-the-Wilderness rail service, Natural History Tour into Denali National Park, Sternwheeler Riverboat Cruise or Gold Dredge 8 Tour in Fairbanks.

*Icy Strait Point replaces Ketchikan on Island Princess® cruises.

ON YOUR OWN

fares from HK\$8,807*

Ask about cruisetour **CBX** (land before cruise) or **CAX** (land after cruise).

For more details, visit princess.com

tour
D

10
nights

Denali Explorer



TOUR DB3 **LAND before CRUISE**

DAY	DESTINATION
By Land	
1	Fairbanks – It may be the most Alaska city of them all, friendly Fairbanks. And it’s the perfect place to begin your Alaska vacation. Check in to your hotel and get out to explore the town. Overnight at a Fairbanks hotel.
2	Fairbanks/Denali – A cruise along the Chena River on a Sternwheeler Riverboat is about as authentic as it gets. Later, you’ll head for Denali National Park via a scenic motorcoach trip to Denali Princess Wilderness Lodge. Overnight at Denali Princess Wilderness Lodge.
3	Denali – You have a full day to get out into one of America’s best national parks. This morning, a Natural History Tour serves as a wonderful introduction to the animals, plants and geological features found here. Later today, you may want to stop by the tour desk to plan an activity such as rafting or hiking. Overnight at Denali Princess Wilderness Lodge.
4	Denali/Whittier/Embark Ship – Enjoy the scenic rail journey through some of the best wilderness in the Great Land on our exclusive Direct-to-the-Wilderness rail service. Once in Whittier, you’ll step from the train onto your ship for the beginning of your unforgettable cruise.
By Sea	
	Southbound Voyage of the Glaciers Cruise
5	Cruising Hubbard Glacier
6	Cruising Glacier Bay National Park
7	Skagway
8	Juneau
9	Ketchikan
10	Cruising the Inside Passage
11	Vancouver, B.C., Canada



OR enjoy this cruisetour in reverse with your land tour after your cruise:

TOUR DA3 **LAND after CRUISE**

- DAY 1** Vancouver, B.C., Canada
- DAY 2** Cruising the Inside Passage
- DAY 3** Ketchikan
- DAY 4** Juneau
- DAY 5** Skagway
- DAY 6** Cruising Glacier Bay National Park
- DAY 7** Cruising College Fjord
- DAY 8** Disembark Ship/Whittier/Denali
- DAY 9** Denali
- DAY 10** Denali/Fairbanks
- DAY 11** Fly home from Fairbanks

2018 DEPARTURES

TOUR DB3 **LAND before CRUISE**

Fairbanks to Vancouver, B.C.

Coral Princess®

May 13, 27 6813, 6815 Jul 8, 22 6821, 6823 Sep 2 6829
Jun 10, 24 6817, 6819 Aug 5, 19 6825, 6827

Island Princess®

May 20 2810 Jul 1, 15, 29 2816, 2818, 2820 Sep 9 2826
Jun 3, 17 2812, 2814 Aug 12, 26 2822, 2824

Interior fares from* **HK\$12,629** Balcony fares from* **HK\$19,259**

TOUR DA3 **LAND after CRUISE**

Vancouver, B.C. to Fairbanks

Golden Princess®

May 19 5814 Jul 14, 28 5822, 5824 Aug 11, 25 5826, 5828
Jun 2, 16, 30 5816, 5818, 5820

Star Princess®

May 12, 26 9812, 9814 Jul 7, 21 9820, 9822 Sep 1 9828
Jun 9, 23 9816, 9818 Aug 4, 18 9824, 9826

Interior fares from* **HK\$11,693** Balcony fares from* **HK\$19,493**

*DA3 fares based on 5/12/18 departure on Star Princess; DB3 fares based on 5/13/18 departure on Coral Princess. Fares for other dates may vary. Taxes, Fees, and Port Expenses of up to HK\$1,989 are additional and subject to change. See page 1 for more details.

tour
E

11
nights

Denali Explorer



TOUR EB4 LAND before CRUISE

DAY	DESTINATION
By Land 1	Anchorage – Explore the surprisingly metropolitan city of Anchorage by getting out to see the shops, restaurants and cultural attractions. Overnight at Hotel Captain Cook.
2	Anchorage/Mt. McKinley – Board your motorcoach for your journey along the George Parks Highway to Mt. McKinley Princess Wilderness Lodge. Take in the sensational views of Denali with a glass of wine out on the expansive deck or from the fireside patio. Overnight at Mt. McKinley Princess Wilderness Lodge.
3	Mt. McKinley/Denali – Depart this afternoon on a scenic motorcoach journey. Arrive at Denali Princess Wilderness Lodge – set above the Nenana River Canyon – for a two-night stay. Denali National Park is just steps away. Overnight at Denali Princess Wilderness Lodge.
4	Denali – Enjoy a full day of the attractions in Denali National Park with a Natural History Tour included to learn more about the park's animals, plants and geological features. Overnight at Denali Princess Wilderness Lodge.
5	Denali/Whittier/Embark Ship – Our Direct-to-the-Wilderness rail service takes you on a scenic rail journey through some of the best wilderness as you head toward Whittier, where your cruise ship awaits.
By Sea	Southbound Voyage of the Glaciers Cruise
6	Cruising Hubbard Glacier
7	Cruising Glacier Bay National Park
8	Skagway
9	Juneau
10	Ketchikan
11	Cruising the Inside Passage
12	Vancouver, B.C., Canada

ON YOUR OWN

fares from HK\$11,147*

Ask about cruisetour **EBX** (land before cruise)

[For more details, visit princess.com](http://princess.com)

OR enjoy this cruisetour in reverse with your land tour after your cruise:

TOUR EA4 LAND after CRUISE

- DAY 1** Vancouver, B.C., Canada
- DAY 2** Cruising the Inside Passage
- DAY 3** Ketchikan*
- DAY 4** Juneau
- DAY 5** Skagway
- DAY 6** Cruising Glacier Bay National Park
- DAY 7** Cruising College Fjord
- DAY 8** Disembark Ship/Whittier/Denali
- DAY 9** Denali
- DAY 10** Denali/Mt. McKinley
- DAY 11** Mt. McKinley/Anchorage
- DAY 12** Fly home from Anchorage

2018 DEPARTURES

TOUR EB4 LAND before CRUISE

Anchorage to Vancouver, B.C.

Coral Princess®

May 12, 26 6813, 6815 Jul 7, 21 6821, 6823 Sep 1 6829
Jun 9, 23 6817, 6819 Aug 4, 18 6825, 6827

Golden Princess®

May 22 5815 Jul 3, 17, 31 5821, 5823, 5825
Jun 5, 19 5817, 5819 Aug 14, 28 5827, 5829

Island Princess®

May 19 2810 Jul 14, 28 2818, 2820 Aug 11, 25 2822, 2824
Jun 2, 16, 30 2812, 2814, 2816 Sep 8 2826

Star Princess®

May 15, 29 9813, 9815 Jul 10, 24 9821, 9823 Sep 4 9829
Jun 12, 26 9817, 9819 Aug 7, 21 9825, 9827

Interior fares from* **HK\$14,033** Balcony fares from* **HK\$20,663**

TOUR EA4 LAND after CRUISE

Vancouver, B.C. to Anchorage

Coral Princess®

May 9, 23 6812, 6814 Jul 4, 18 6820, 6822
Jun 6, 20 6816, 6818 Aug 1, 15, 29 6824, 6826, 6828

Golden Princess®

May 19 5814 Jul 14, 28 5822, 5824 Aug 11, 25 5826, 5828
Jun 2, 16, 30 5816, 5818, 5820

Island Princess®

May 16, 30 2809, 2811 Jul 11, 25 2817, 2819
Jun 13, 27 2813, 2815 Aug 8, 22 2821, 2823

Star Princess®

May 12, 26 9812, 9814 Jul 7, 21 9820, 9822 Sep 1 9828
Jun 9, 23 9816, 9818 Aug 4, 18 9824, 9826

Interior fares from* **HK\$12,707** Balcony fares from* **HK\$19,337**

*EA4 fares based on 5/9/18 departure on Coral Princess®; EB4 fares based on 5/12/18 departure on Coral Princess®; Fares for other dates may vary. Taxes, Fees, and Port Expenses of up to HK\$2,067 are additional and subject to change. See page 1 for more details.

*On Your Own cruisetour options do not include Direct-to-the-Wilderness rail service, Natural History Tour into Denali National Park.

*Icy Strait Point replaces Ketchikan on Island Princess® cruises.

tour
F

11
nights

Denali Explorer



TOUR FB4 LAND before CRUISE

DAY	DESTINATION
By Land 1	Fairbanks – Begin your Alaska vacation in friendly Fairbanks. Check in to your hotel and get out to see some of the town. Overnight at a Fairbanks hotel.
2	Fairbanks/Denali – Enjoy a Sternwheeler Riverboat Cruise before heading for Denali National Park via motorcoach to arrive at Denali Princess Wilderness Lodge – your first of two destinations in Denali. Overnight at Denali Princess Wilderness Lodge.
3	Denali – You have a full day to get out into one of America’s best national parks. This morning, a Natural History Tour serves as a wonderful introduction to the animals, plants and geological features found here. Later today, you may want to stop by the tour desk to plan an activity such as rafting or hiking. Overnight at Denali Princess Wilderness Lodge.
4	Denali/Mt. McKinley – Depart via motorcoach to Mt. McKinley Princess Wilderness Lodge. Relish in the many amenities our lodge has to offer, such as the fireside patio, Hudson Theater and Great Room with a wood-burning fireplace. Overnight at Mt. McKinley Princess Wilderness Lodge.
5	Mt. McKinley/Whittier/Embark Ship – Our Direct-to-the-Wilderness rail service takes you on a scenic rail journey through some of the best wilderness as you head toward Whittier, where your cruise ship awaits.
By Sea	Southbound Voyage of the Glaciers Cruise
6	Cruising Hubbard Glacier
7	Cruising Glacier Bay National Park
8	Skagway
9	Juneau
10	Ketchikan
11	Cruising the Inside Passage
12	Vancouver, B.C., Canada

OR enjoy this cruisetour in reverse with your land tour after your cruise:

TOUR FA4 LAND after CRUISE

- DAY 1** Vancouver, B.C., Canada
- DAY 2** Cruising the Inside Passage
- DAY 3** Ketchikan*
- DAY 4** Juneau
- DAY 5** Skagway
- DAY 6** Cruising Glacier Bay National Park
- DAY 7** Cruising College Fjord
- DAY 8** Disembark Ship/Whittier/Mt. McKinley
- DAY 9** Mt. McKinley/Denali
- DAY 10** Denali
- DAY 11** Denali/Fairbanks
- DAY 12** Fly home from Fairbanks

2018 DEPARTURES

TOUR FB4 LAND before CRUISE

Fairbanks to Vancouver, B.C.

Coral Princess®

May 12, 26 6813, 6815 Jul 7, 21 6821, 6823 Sep 1 6829
Jun 9, 23 6817, 6819 Aug 4, 18 6825, 6827

Golden Princess®

May 8, 22 5813, 5815 Jul 3, 17, 31 5821, 5823, 5825
Jun 5, 19 5817, 5819 Aug 14, 28 5827, 5829

Island Princess®

May 19 2810 Jul 14, 28 2818, 2820 Aug 11, 25 2822, 2824
Jun 2, 16, 30 2812, 2814, 2816 Sep 8 2826

Star Princess®

May 15, 29 9813, 9815 Jul 10, 24 9821, 9823 Sep 4 9829
Jun 12, 26 9817, 9819 Aug 7, 21 9825, 9827

Interior fares from* **HK\$12,863** Balcony fares from* **HK\$20,663**

TOUR FA4 LAND after CRUISE

Vancouver, B.C. to Fairbanks

Coral Princess®

May 9, 23 6812, 6814 Jul 4, 18 6820, 6822
Jun 6, 20 6816, 6818 Aug 1, 15, 29 6824, 6826, 6828

Golden Princess®

May 19 5814 Jul 14, 28 5822, 5824 Aug 11, 25 5826, 5828
Jun 2, 16, 30 5816, 5818, 5820

Island Princess®

May 16, 30 2809, 2811 Jul 11, 25 2817, 2819 Sep 5 2825
Jun 13, 27 2813, 2815 Aug 8, 22 2821, 2823

Star Princess®

May 12, 26 9812, 9814 Jul 7, 21 9820, 9822 Sep 1 9828
Jun 9, 23 9816, 9818 Aug 4, 18 9824, 9826

Interior fares from* **HK\$12,863** Balcony fares from* **HK\$19,493**

*FA4 fares based on 5/9/18 departure on Coral Princess®. FB4 fares based on 5/8/18 departure on Golden Princess®. Fares for other dates may vary. Taxes, Fees, and Port Expenses of up to HK\$1,989 are additional and subject to change. See page 1 for more details.

*Icy Strait Point replaces Ketchikan on Island Princess® cruises.

tour
G

11
nights

Denali Explorer



TOUR GB4 LAND before CRUISE

DAY	DESTINATION
By Land 1	Fairbanks – Arrive in Fairbanks and settle in for two nights. Overnight at a Fairbanks hotel.
2	Fairbanks – Spend a wonderful day in the “Golden Heart City.” An authentic Sternwheeler Riverboat Cruise takes you to an Athabaskan fishing village and dog sled kennels. You’ll also enjoy a tour to Gold Dredge 8, where you can try panning for gold. Overnight at a Fairbanks hotel.
3	Fairbanks/Denali – Travel by motorcoach to Denali Princess Wilderness Lodge, with incredible views all along the way. Once there, check out the deck and vistas of the Nenana River Canyon. Overnight at Denali Princess Wilderness Lodge.
4	Denali – A morning Natural History Tour into the park sets the day’s tone. This afternoon, plan your own activity, like a helicopter adventure or whitewater rafting in the Nenana Gorge. Overnight at Denali Princess Wilderness Lodge.
5	Denali/Whittier/Embark Ship – Same-day rail service between Denali and the ship dock at Whittier means you get to linger at Denali without missing any time enjoying Alaska’s splendors due to logistics and transfers. You’ll step right off your rail car and onto your waiting ship in Whittier.
By Sea	Southbound Voyage of the Glaciers Cruise
6	Cruising Hubbard Glacier
7	Cruising Glacier Bay National Park
8	Skagway
9	Juneau
10	Ketchikan
11	Cruising the Inside Passage
12	Vancouver, B.C., Canada

OR enjoy this cruisetour in reverse with your land tour after your cruise:

TOUR GA4 LAND after CRUISE

- DAY 1 Vancouver, B.C., Canada
- DAY 2 Cruising the Inside Passage
- DAY 3 Ketchikan*
- DAY 4 Juneau
- DAY 5 Skagway
- DAY 6 Cruising Glacier Bay National Park
- DAY 7 Cruising College Fjord
- DAY 8 Disembark Ship/Whittier/Denali
- DAY 9 Denali
- DAY 10 Denali/Fairbanks
- DAY 11 Fairbanks
- DAY 12 Fly home from Fairbanks

2018 DEPARTURES

TOUR GB4 LAND before CRUISE

Fairbanks to Vancouver, B.C.

Coral Princess®

May 12, 26 6813, 6815 Jul 7, 21 6821, 6823 Sep 1 6829
Jun 9, 23 6817, 6819 Aug 4, 18 6825, 6827

Golden Princess®

May 8, 22 5813, 5815 Jul 3, 17, 31 5821, 5823, 5825
Jun 5, 19 5817, 5819 Aug 14, 28 5827, 5829

Island Princess®

May 19 2810 Jul 14, 28 2818, 2820 Aug 11, 25 2822, 2824
Jun 2, 16, 30 2812, 2814, 2816 Sep 8 2826

Star Princess®

May 15, 29 9813, 9815 Jul 10, 24 9821, 9823 Sep 4 9829
Jun 12, 26 9817, 9819 Aug 7, 21 9825, 9827

Interior fares from* **HK\$12,473** Balcony fares from* **HK\$20,273**

TOUR GA4 LAND after CRUISE

Vancouver, B.C. to Fairbanks

Coral Princess®

May 9, 23 6812, 6814 Jul 4, 18 6820, 6822
Jun 6, 20 6816, 6818 Aug 1, 15, 29 6824, 6826, 6828

Golden Princess®

May 19 5814 Jul 14, 28 5822, 5824 Aug 11, 25 5826, 5828
Jun 2, 16, 30 5816, 5818, 5820

Island Princess®

May 16, 30 2809, 2811 Jul 11, 25 2817, 2819 Sep 5 2825
Jun 13, 27 2813, 2815 Aug 8, 22 2821, 2823

Star Princess®

May 12, 26 9812, 9814 Jul 7, 21 9820, 9822 Sep 1 9828
Jun 9, 23 9816, 9818 Aug 4, 18 9824, 9826

Interior fares from* **HK\$12,473** Balcony fares from* **HK\$19,103**

*GA4 fares based on 5/9/18 departure on Coral Princess®; GB4 fares based on 5/18/18 departure on Golden Princess®. Fares for other dates may vary. Taxes, Fees, and Port Expenses of up to HK\$2,028 are additional and subject to change. See page 1 for more details.

*Icy Strait Point replaces Ketchikan on Island Princess® cruises.

tour
H

12
nights

Denali Explorer



TOUR HB5 LAND before CRUISE

DAY	DESTINATION
By Land 1	Anchorage – Explore the surprisingly metropolitan city of Anchorage by getting out to see the shops, restaurants and cultural attractions. Overnight at Hotel Captain Cook.
2	Anchorage/Mt. McKinley – Board a motorcoach for your journey along the George Parks Highway. You may catch your first views of incredible Denali along the way. Once you arrive at Mt. McKinley Princess Wilderness Lodge, take in the sensational views with a glass of wine in the Great Room or on the expansive deck. Overnight at Mt. McKinley Princess Wilderness Lodge.
3	Mt. McKinley – You have a full day to spend however you choose. Visit the tour desk for ideas about excursions. Or, explore the nature trails for sweeping vistas. Overnight at Mt. McKinley Princess Wilderness Lodge.
4	Mt. McKinley/Denali – Arrive by motorcoach at Denali Princess Wilderness Lodge – set above the Nenana River Canyon – for a two-night stay. Denali National Park is just steps away. Overnight at Denali Princess Wilderness Lodge.
5	Denali – Today’s highlight is a Natural History Tour into the park, introducing you to its plants, animals and geography. Later, you’ll have time to choose from excursions like rafting or flightseeing. Overnight at Denali Princess Wilderness Lodge.
6	Denali/Whittier/Embark Ship – Our Direct-to-the-Wilderness rail service takes you on a scenic rail journey through some of the best wilderness as you head toward Whittier, where your cruise ship awaits.
By Sea	Southbound Voyage of the Glaciers Cruise
7	Cruising Hubbard Glacier
8	Cruising Glacier Bay National Park
9	Skagway
10	Juneau
11	Ketchikan
12	Cruising the Inside Passage
13	Vancouver, B.C., Canada

OR enjoy this cruisetour in reverse with your land tour after your cruise:

TOUR HA5 LAND after CRUISE

- DAY 1** Vancouver, B.C., Canada
- DAY 2** Cruising the Inside Passage
- DAY 3** Ketchikan*
- DAY 4** Juneau
- DAY 5** Skagway
- DAY 6** Cruising Glacier Bay National Park
- DAY 7** Cruising College Fjord
- DAY 8** Disembark Ship/Whittier/Denali
- DAY 9** Denali
- DAY 10** Denali/Mt. McKinley
- DAY 11** Mt. McKinley
- DAY 12** Mt. McKinley/Anchorage
- DAY 13** Fly home from Anchorage

2018 DEPARTURES

TOUR HB5 LAND before CRUISE

Anchorage to Vancouver, B.C.

<i>Coral Princess</i> [®]		
May 11, 25 6813, 6815	Jul 6, 20 6821, 6823	
Jun 8, 22 6817, 6819	Aug 3, 17, 31 6825, 6827, 6829	
<i>Golden Princess</i> [®]		
May 21 5815	Jul 2, 16, 30 5821, 5823, 5825	
Jun 4, 18 5817, 5819	Aug 13, 27 5827, 5829	
<i>Island Princess</i> [®]		
May 18 2810	Jul 13, 27 2818, 2820	Aug 10, 24 2822, 2824
Jun 1, 15, 29 2812, 2814, 2816		Sep 7 2826
<i>Star Princess</i> [®]		
May 14, 28 9813, 9815	Jul 9, 23 9821, 9823	Sep 3 9829
Jun 11, 25 9817, 9819	Aug 6, 20 9825, 9827	

Interior fares from* **HK\$14,969** Balcony fares from* **HK\$21,599**

TOUR HA5 LAND after CRUISE

Vancouver, B.C. to Anchorage

<i>Coral Princess</i> [®]		
May 9, 23 6812, 6814	Jul 4, 18 6820, 6822	
Jun 6, 20 6816, 6818	Aug 1, 15, 29 6824, 6826, 6828	
<i>Island Princess</i> [®]		
May 16, 30 2809, 2811	Jul 11, 25 2817, 2819	
Jun 13, 27 2813, 2815	Aug 8, 22 2821, 2823	

Interior fares from* **HK\$13,799** Balcony fares from* **HK\$20,429**

*HA5 fares based on 5/9/18 departure on Coral Princess. HB5 fares based on 5/11/18 departure on Coral Princess. Fares for other dates may vary. Taxes, Fees, and Port Expenses of up to \$2,067 are additional and subject to change. See page 1 for more details.

*Icy Strait Point replaces Ketchikan on Island Princess[®] cruises.

tour
I

12
nights

Denali Explorer



TOUR IB5 LAND before CRUISE

DAY	DESTINATION
By Land 1	Fairbanks – Alaska’s “Golden Heart City” of Fairbanks is a great introduction to the heart of this unique state. Overnight at a Fairbanks hotel.
2	Fairbanks/Denali – Enjoy a Sternwheeler Riverboat Cruise before heading for Denali National Park and Denali Princess Wilderness Lodge via motorcoach – your first of two destinations in the Denali area. Overnight at Denali Princess Wilderness Lodge.
3	Denali – Your morning begins with a Natural History Tour to learn more about the flora and fauna of the area. Afterward, drop by the tour desk and ask about other activities. Overnight at Denali Princess Wilderness Lodge.
4	Denali/Mt. McKinley – Depart via motorcoach to Mt. McKinley Princess Wilderness Lodge. Relish in the many amenities our lodge has to offer, such as the fireside patio, Hudson Theater and Great Room with a wood-burning fireplace. Overnight at Mt. McKinley Princess Wilderness Lodge.
5	Mt. McKinley – You have a full day to spend however you choose. Visit the tour desk for ideas about excursions. Or, explore the nature trails for sweeping vistas. Overnight at Mt. McKinley Princess Wilderness Lodge.
6	Mt. McKinley/Whittier/Embark Ship – Our Direct-to-the-Wilderness rail service takes you on a scenic rail journey through some of the best wilderness as you head toward Whittier, where your cruise ship awaits.
By Sea	Southbound Voyage of the Glaciers Cruise
7	Cruising Hubbard Glacier
8	Cruising Glacier Bay National Park
9	Skagway
10	Juneau
11	Ketchikan
12	Cruising the Inside Passage
13	Vancouver, B.C., Canada

OR enjoy this cruisetour in reverse with your land tour after your cruise:

TOUR IA5 LAND after CRUISE

- DAY 1 Vancouver, B.C., Canada
- DAY 2 Cruising the Inside Passage
- DAY 3 Ketchikan*
- DAY 4 Juneau
- DAY 5 Skagway
- DAY 6 Cruising Glacier Bay National Park
- DAY 7 Cruising College Fjord
- DAY 8 Disembark Ship/Whittier/Mt. McKinley
- DAY 9 Mt. McKinley
- DAY 10 Mt. McKinley/Denali
- DAY 11 Denali
- DAY 12 Denali/Fairbanks
- DAY 13 Fly home from Fairbanks

2018 DEPARTURES

TOUR IB5 LAND before CRUISE

Fairbanks to Vancouver, B.C.

Coral Princess®		
May 11, 25 6813, 6815	Jul 6, 20 6821, 6823	
Jun 8, 22 6817, 6819	Aug 3, 17, 31 6825, 6827, 6829	
Golden Princess®		
May 21 5815	Jul 2, 16, 30 5821, 5823, 5825	
Jun 4, 18 5817, 5819	Aug 13, 27 5827, 5829	
Island Princess®		
May 18 2810	Jul 13, 27 2818, 2820	Aug 10, 24 2822, 2824
Jun 1, 15, 29 2812, 2814, 2816		Sep 7 2826
Star Princess®		
May 14, 28 9813, 9815	Jul 9, 23 9821, 9823	Sep 3 9829
Jun 11, 25 9817, 9819	Aug 6, 20 9825, 9827	

Interior fares from* **HK\$14,813** Balcony fares from* **HK\$21,443**

TOUR IA5 LAND after CRUISE

Vancouver, B.C. to Fairbanks

Coral Princess®		
May 9, 23 6812, 6814	Jul 4, 18 6820, 6822	
Jun 6, 20 6816, 6818	Aug 1, 15, 29 6824, 6826, 6828	
Golden Princess®		
May 19 5814	Jul 14, 28 5822, 5824	Aug 11, 25 5826, 5828
Jun 2, 16, 30 5816, 5818, 5820		
Island Princess®		
May 16, 30 2809, 2811	Jul 11, 25 2817, 2819	Sep 5 2825
Jun 13, 27 2813, 2815	Aug 8, 22 2821, 2823	
Star Princess®		
May 12, 26 9812, 9814	Jul 7, 21 9820, 9822	Sep 1 9828
Jun 9, 23 9816, 9818	Aug 4, 18 9824, 9826	

Interior fares from* **HK\$13,643** Balcony fares from* **HK\$20,273**

*IA5 fares based on 5/9/18 departure on Coral Princess®. IB5 fares based on 5/11/18 departure on Coral Princess®. Fares for other dates may vary. Taxes, Fees, and Port Expenses of up to HK\$2,028 are additional and subject to change. See page 1 for more details.

*Icy Strait Point replaces Ketchikan on Island Princess® cruises.

tour
J

12
nights

Denali Explorer



TOUR JB5 LAND before CRUISE

DAY	DESTINATION
By Land 1	Fairbanks – Alaska’s “Golden Heart City” of Fairbanks is a great introduction to the heart of this unique state. Overnight at a Fairbanks hotel.
2	Fairbanks – Enjoy a Sternwheeler Riverboat Cruise in the morning, and then a Gold Dredge 8 Tour in the afternoon. Then you have the rest of the day to further explore the town. Overnight at a Fairbanks hotel.
3	Fairbanks/Denali – Travel by comfortable motorcoach to Denali National Park and check in to Denali Princess Wilderness Lodge. Your afternoon includes an educational Natural History Tour into the park. Overnight at Denali Princess Wilderness Lodge.
4	Denali/Mt. McKinley – Travel by motorcoach to Mt. McKinley Princess Wilderness Lodge, where the mountain is visible from nearly anywhere on the property. Relish in the many amenities our lodge has to offer. Overnight at Mt. McKinley Princess Wilderness Lodge.
5	Mt. McKinley/Anchorage – After a leisurely morning, journey via rail from Talkeetna to Anchorage. Overnight at Hotel Captain Cook.
6	Anchorage/Whittier/Embark Ship – Travel to Whittier with a stop at the Alaska Wildlife Conservation Center before boarding your ship in the afternoon.
By Sea	Southbound Voyage of the Glaciers Cruise
7	Cruising Hubbard Glacier
8	Cruising Glacier Bay National Park
9	Skagway
10	Juneau
11	Ketchikan
12	Cruising the Inside Passage
13	Vancouver, B.C., Canada

OR enjoy this cruisetour in reverse with your land tour after your cruise:

TOUR JA5 LAND after CRUISE

- DAY 1** Vancouver, B.C., Canada
- DAY 2** Cruising the Inside Passage
- DAY 3** Ketchikan
- DAY 4** Juneau
- DAY 5** Skagway
- DAY 6** Cruising Glacier Bay National Park
- DAY 7** Cruising College Fjord
- DAY 8** Disembark Ship/Whittier/Anchorage
- DAY 9** Anchorage/Mt. McKinley
- DAY 10** Mt. McKinley/Denali
- DAY 11** Denali/Fairbanks
- DAY 12** Fairbanks
- DAY 13** Fly home from Fairbanks

2018 DEPARTURES

TOUR JB5 LAND before CRUISE

Fairbanks to Vancouver, B.C.

Coral Princess®	May 11, 25 6813, 6815	Jul 6, 20 6821, 6823
	Jun 8, 22 6817, 6819	Aug 3, 17, 31 6825, 6827, 6829
Golden Princess®	May 7, 21 5813, 5815	Jul 2, 16, 30 5821, 5823, 5825
	Jun 4, 18 5817, 5819	Aug 13, 27 5827, 5829
Island Princess®	May 18 2810	Jul 13, 27 2818, 2820
	Jun 1, 15, 29 2812, 2814, 2816	Aug 10, 24 2822, 2824
		Sep 7 2826
Star Princess®	May 14, 28 9813, 9815	Jul 9, 23 9821, 9823
	Jun 11, 25 9817, 9819	Aug 6, 20 9825, 9827
		Sep 3 9829

Interior fares from* **HK\$12,863** Balcony fares from* **HK\$20,663**

TOUR JA5 LAND after CRUISE

Vancouver, B.C. to Fairbanks

Coral Princess®	May 9, 23 6812, 6814	Jul 4, 18 6820, 6822
	Jun 6, 20 6816, 6818	Aug 1, 15, 29 6824, 6826, 6828
Star Princess®	May 12, 26 9812, 9814	Jul 7, 21 9820, 9822
	Jun 9, 23 9816, 9818	Aug 4, 18 9824, 9826
		Sep 1 9828

Interior fares from* **HK\$12,629** Balcony fares from* **HK\$19,259**

*JA5 fares based on 5/9/18 departure on Coral Princess. JB5 fares based on 5/7/18 departure on Golden Princess. Fares for other dates may vary. Taxes, Fees, and Port Expenses of up to HK\$2,106 are additional and subject to change. See page 1 for more details.

tour
K

13
nights

Denali Explorer



TOUR KB6 LAND before CRUISE

DAY	DESTINATION
By Land 1	Fairbanks – Begin your vacation with a wonderful two-night stay in Fairbanks. Overnight at a Fairbanks hotel.
2	Fairbanks – Embark on an authentic Sternwheeler Riverboat Cruise and Gold Dredge 8 Tour, which features a chance to pan for gold. A hearty lunch is included. The evening is yours to spend however you choose. Overnight at a Fairbanks hotel.
3	Fairbanks/Denali – Travel to Denali Princess Wilderness Lodge via motorcoach. Once there, check out the deck and vistas of the Nenana River Canyon. Overnight at Denali Princess Wilderness Lodge.
4	Denali – Your morning begins with a Natural History Tour to learn more about the flora and fauna of the area. Afterward, drop by the tour desk and ask about other activities. Overnight at Denali Princess Wilderness Lodge.
5	Denali/Mt. McKinley – This morning you'll travel by motorcoach to the south side of the park for an overnight stay at Mt. McKinley Princess Wilderness Lodge, where the views are nothing short of inspiring. Consider an optional excursion or simply relax at the lodge. Overnight at Mt. McKinley Princess Wilderness Lodge.
6	Mt. McKinley You have a full day to spend however you choose. Visit the tour desk for ideas about excursions. Or, explore the nature trails for sweeping vistas. Overnight at Mt. McKinley Princess Wilderness Lodge.
7	Mt. McKinley/Whittier/Embark Ship – Our Direct-to-the-Wilderness rail service takes you on a scenic rail journey through some of the best wilderness as you head toward Whittier, where your cruise ship awaits.
By Sea	Southbound Voyage of the Glaciers Cruise
8	Cruising Hubbard Glacier
9	Cruising Glacier Bay National Park
10	Skagway
11	Juneau
12	Ketchikan
13	Cruising the Inside Passage
14	Vancouver, B.C., Canada

OR enjoy this cruisetour in reverse with your land tour after your cruise:

TOUR KA6 LAND after CRUISE

- DAY 1** Vancouver, B.C., Canada
- DAY 2** Cruising the Inside Passage
- DAY 3** Ketchikan*
- DAY 4** Juneau
- DAY 5** Skagway
- DAY 6** Cruising Glacier Bay National Park
- DAY 7** Cruising College Fjord
- DAY 8** Disembark Ship/Whittier/Mt. McKinley
- DAY 9** Mt. McKinley
- DAY 10** Mt. McKinley/Denali
- DAY 11** Denali
- DAY 12** Denali/Fairbanks
- DAY 13** Fairbanks
- DAY 14** Fly home from Fairbanks

2018 DEPARTURES

TOUR KB6 LAND before CRUISE

Fairbanks to Vancouver, B.C.

Coral Princess®

May 10, 24 6813, 6815 Jul 5, 19 6821, 6823
Jun 7, 21 6817, 6819 Aug 2, 16, 30 6825, 6827, 6829

Golden Princess®

May 20 5815 Jul 1, 15, 29 5821, 5823, 5825
Jun 3, 17 5817, 5819 Aug 12, 26 5827, 5829

Island Princess®

May 17, 31 2810, 2812 Jul 12, 26 2818, 2820 Sep 6 2826
Jun 14, 28 2814, 2816 Aug 9, 23 2822, 2824

Star Princess®

May 13, 27 9813, 9815 Jul 8, 22 9821, 9823 Sep 2 9829
Jun 10, 24 9817, 9819 Aug 5, 19 9825, 9827

Interior fares from* **HK\$16,139** Balcony fares from* **HK\$22,769**

TOUR KA6 LAND after CRUISE

Vancouver, B.C. to Fairbanks

Coral Princess®

May 9, 23 6812, 6814 Jul 4, 18 6820, 6822
Jun 6, 20 6816, 6818 Aug 1, 15, 29 6824, 6826, 6828

Golden Princess®

May 19 5814 Jul 14, 28 5822, 5824 Aug 11, 25 5826, 5828
Jun 2, 16, 30 5816, 5818, 5820

Island Princess®

May 16, 30 2809, 2811 Jul 11, 25 2817, 2819 Sep 5 2825
Jun 13, 27 2813, 2815 Aug 8, 22 2821, 2823

Star Princess®

May 12, 26 9812, 9814 Jul 7, 21 9820, 9822 Sep 1 9828
Jun 9, 23 9816, 9818 Aug 4, 18 9824, 9826

Interior fares from* **HK\$14,189** Balcony fares from* **HK\$20,819**

*KA6 fares based on 5/9/18 departure on Coral Princess®. KB6 fares based on 5/10/18 departure on Coral Princess®. Fares for other dates may vary. Taxes, Fees, and Port Expenses of up to HK\$2,067 are additional and subject to change. See page 1 for more details.

*Icy Strait Point replaces Ketchikan on Island Princess® cruises.

off the beaten path cruisetours



With our Off the Beaten Path cruisetours, you'll experience the best features of our Denali Explorer vacations plus time at our Princess Wilderness Lodges located on the Kenai Peninsula near dazzling Kenai Fjords National Park or Copper River just outside Wrangell-St. Elias National Park.

- Seven-day Voyage of the Glaciers cruise
- Two or more unforgettable nights in the Denali area, plus stays at the Kenai Peninsula or Wrangell-St. Elias National Park
- Spectacular Princess rail service
- Stays at Princess Wilderness Lodges
- Sternwheeler Riverboat Cruise and Gold Dredge 8 Tour in Fairbanks (if applicable)
- Natural History Tour into Denali National Park (option to upgrade to the Tundra Wilderness Tour at additional cost)



ALSO LOOK FOR
the Princess Rail symbol for itineraries including this service. It features beautiful Alaska scenery, plus our warm Princess service.

tour
L

13
nights

Off the Beaten Path



TOUR LB6 **LAND before CRUISE**

DAY	DESTINATION
By Land 1	Anchorage - Explore the surprisingly metropolitan city of Anchorage by getting out to see the shops, restaurants and cultural attractions. Overnight at Hotel Captain Cook.
2	Anchorage/Mt. McKinley - Travel via rail to Talkeetna and motorcoach to Mt. McKinley Princess Wilderness Lodge, where sweeping views of Denali are the main attraction. Relish in the many amenities our lodge has to offer, such as a Great Room with wood-burning fireplace, fireside patio, tour desk and Hudson Theater. Overnight at Mt. McKinley Princess Wilderness Lodge.
3	Mt. McKinley/Denali - Take a scenic motorcoach journey to Denali Princess Wilderness Lodge with our trademark Princess service. Denali National Park is just steps away. Overnight at Denali Princess Wilderness Lodge.
4	Denali - Your full day at Denali Princess Wilderness Lodge includes a Natural History Tour of the park as well as free time to plan your own excursion, such as a summit flight tour or rafting. Overnight at Denali Princess Wilderness Lodge.
5	Denali/Copper River - Sightsee via the Denali Highway to Copper River Princess Wilderness Lodge. Savor views of Mt. Drum, Mt. Wrangell and Mt. Blackburn from the two-story Wrangell Room. Overnight at Copper River Princess Wilderness Lodge.
6	Copper River - Venture out into massive Wrangell-St. Elias National Park - the largest in the United States - or visit the tour desk for ideas about excursions. Overnight at Copper River Princess Wilderness Lodge.
7	Copper River/Whittier/Embark Ship - Set out by motorcoach for the journey to Valdez, and then enjoy a scenic catamaran ride across Prince William Sound to Whittier, where your cruise ship awaits. Along the way, you'll stop at Matanuska Glacier.
By Sea	Southbound Voyage of the Glaciers Cruise
8	Cruising Hubbard Glacier
9	Cruising Glacier Bay National Park
10	Skagway
11	Juneau
12	Ketchikan
13	Cruising the Inside Passage
14	Vancouver, B.C., Canada



OR enjoy this cruisetour in reverse with your land tour after your cruise:

TOUR LA6 **LAND after CRUISE**

- DAY 1** Vancouver, B.C., Canada
- DAY 2** Cruising the Inside Passage
- DAY 3** Ketchikan
- DAY 4** Juneau
- DAY 5** Skagway
- DAY 6** Cruising Glacier Bay National Park
- DAY 7** Cruising College Fjord
- DAY 8** Disembark Ship/Whittier/Copper River
- DAY 9** Copper River
- DAY 10** Copper River/Denali
- DAY 11** Denali
- DAY 12** Denali/Mt. McKinley
- DAY 13** Mt. McKinley/Anchorage
- DAY 14** Fly home from Anchorage

2018 DEPARTURES

TOUR LB6 **LAND before CRUISE**

Anchorage to Vancouver, B.C.

Island Princess®

May 17, 31 2810, 2812 Jul 12, 26 2818, 2820
Jun 14, 28 2814, 2816 Aug 9, 23 2822, 2824

Interior fares from* **HK\$17,153** Balcony fares from* **HK\$24,173**

TOUR LA6 **LAND after CRUISE**

Vancouver, B.C. to Anchorage

Golden Princess®

May 19 5814 Jul 14, 28 5822, 5824 Aug 11, 25 5826, 5828
Jun 2, 16, 30 5816, 5818, 5820

Interior fares from* **HK\$15,203** Balcony fares from* **HK\$23,003**

*LA6 fares based on 5/19/18 departure on Golden Princess; LB6 fares based on 5/17/18 departure on Island Princess. Fares for other dates may vary. Taxes, Fees, and Port Expenses of up to HK\$2,067 are additional and subject to change. See page 1 for more details.


tour
M

14
nights

Off the Beaten Path



TOUR MB7 **LAND before CRUISE**

DAY	DESTINATION
By Land 1	Anchorage – Explore this surprisingly metropolitan city by getting out to see the shops, restaurants and attractions. Overnight at Hotel Captain Cook.
2	Anchorage/Copper River – Sightsee via the Glenn Highway to Copper River Princess Wilderness Lodge. Savor the views around the lodge. Overnight at Copper River Princess Wilderness Lodge.
3	Copper River – Venture out into massive Wrangell-St. Elias National Park – the largest in the United States, or visit the tour desk for ideas. Overnight at Copper River Princess Wilderness Lodge.
4	Copper River/Fairbanks – Take a scenic motorcoach ride to Fairbanks, known as Alaska’s “Golden Heart City.” Enjoy an evening of leisure. Overnight at a Fairbanks hotel.
5	Fairbanks – Today you’ll be treated to an authentic Sternwheeler Riverboat Cruise on the Chena River and a tour at Gold Dredge 8 with a hearty miner’s lunch. Then you have the rest of the day to further explore the town. Overnight at a Fairbanks hotel.
6	Fairbanks/Denali – Travel by motorcoach to Denali National Park and check-in to Denali Princess Wilderness Lodge, followed by a Natural History Tour. Overnight at Denali Princess Wilderness Lodge.
7	 Denali/Mt. McKinley – Hop on the Princess rail service to Talkeetna and then enjoy a scenic motorcoach trip to the south side of the park and Mt. McKinley Princess Wilderness Lodge. Overnight at Mt. McKinley Princess Wilderness Lodge.
8	Mt. McKinley/Whittier/Embark Ship – Take a scenic motorcoach journey through some of the best wilderness with a stop at the Alaska Wildlife Conservation Center, as you head toward Whittier, where your ship awaits.
By Sea	Southbound Voyage of the Glaciers Cruise
9	Cruising Hubbard Glacier
10	Cruising Glacier Bay National Park
11	Skagway
12	Juneau
13	Ketchikan
14	Cruising the Inside Passage
15	Vancouver, B.C., Canada



2018 DEPARTURES

TOUR MB7 **LAND before CRUISE**

Anchorage to Vancouver, B.C.

Coral Princess®

May 23 6815 Jul 4, 18 6821, 6823
Jun 6, 20 6817, 6819 Aug 1, 15, 29 6825, 6827, 6829

Golden Princess®

May 19 5815 Jul 14, 28 5823, 5825 Aug 11, 25 5827, 5829
Jun 2, 16, 30 5817, 5819, 5821

Island Princess®

May 16, 30 2810, 2812 Jul 11, 25 2818, 2820 Sep 5 2826
Jun 13, 27 2814, 2816 Aug 8, 22 2822, 2824

Star Princess®

May 26 9815 Jul 7, 21 9821, 9823 Sep 1 9829
Jun 9, 23 9817, 9819 Aug 4, 18 9825, 9827

Interior fares from* **HK\$16,763** Balcony fares from* **HK\$24,173**

*MB7 fares based on 5/19/18 departure on Golden Princess®. Fares for other dates may vary. Taxes, Fees, and Port Expenses of up to HK\$2,106 are additional and subject to change. See page 1 for more details.

OPPOSITE PAGE: Salmon fishing by Jet Boat in the Klutina River.

THIS PAGE: A friendly greeting to Princess® rail service; Sternwheeler Riverboat in Fairbanks.

tour
N

14
nights

Off the Beaten Path



TOUR NB7 LAND before CRUISE

DAY	DESTINATION
By Land 1	Fairbanks – Alaska’s “Golden Heart City” of Fairbanks is a great introduction to the heart of this unique state. Overnight at a Fairbanks hotel.
2	Fairbanks – Enjoy a Gold Dredge 8 Tour in the morning and then a Sternwheeler Riverboat Cruise in the afternoon. Then you have the rest of the day to further explore the town. Overnight at a Fairbanks hotel.
3	Fairbanks/Denali – Take a scenic motorcoach journey to Denali Princess Wilderness Lodge with our trademark Princess service. Once there, check out the deck and vistas of the Nenana River Canyon. Overnight at Denali Princess Wilderness Lodge.
4	Denali – A morning Natural History Tour into the park sets the day’s tone. This afternoon, plan your own activity, like a helicopter adventure or whitewater rafting in the Nenana Gorge. Overnight at Denali Princess Wilderness Lodge.
5	Denali/Mt. McKinley – Travel by scenic Princess rail service to Talkeetna and board a motorcoach to Mt. McKinley Princess Wilderness Lodge set in the shadow of stunning Denali. Overnight at Mt. McKinley Princess Wilderness Lodge.
6	Mt. McKinley/Kenai – A gorgeous motorcoach ride takes you across the Kenai Peninsula to Cooper Landing and Kenai Princess Wilderness Lodge. Overnight at Kenai Princess Wilderness Lodge.
7	Kenai – You have a full day to spend however you choose. Visit the tour desk for ideas about excursions. Or, simply relax and admire the beautiful views from the lodge. Overnight at Kenai Princess Wilderness Lodge.
8	Kenai/Whittier/Embark Ship – Set out by motorcoach for the journey to Whittier, where your cruise ship awaits.
By Sea	Southbound Voyage of the Glaciers Cruise
9	Cruising Hubbard Glacier
10	Cruising Glacier Bay National Park
11	Skagway
12	Juneau
13	Ketchikan
14	Cruising the Inside Passage
15	Vancouver, B.C., Canada

OR enjoy this cruisetour in reverse with your land tour after your cruise:

TOUR NA7 LAND after CRUISE

- DAY 1 Vancouver, B.C., Canada
- DAY 2 Cruising the Inside Passage
- DAY 3 Ketchikan
- DAY 4 Juneau
- DAY 5 Skagway
- DAY 6 Cruising Glacier Bay National Park
- DAY 7 Cruising College Fjord
- DAY 8 Disembark Ship/Whittier/Kenai
- DAY 9 Kenai
- DAY 10 Kenai/Mt. McKinley
- DAY 11 Mt. McKinley/Denali
- DAY 12 Denali
- DAY 13 Denali/Fairbanks
- DAY 14 Fairbanks
- DAY 15 Fly home from Fairbanks

2018 DEPARTURES

TOUR NB7 LAND before CRUISE

Fairbanks to Vancouver, B.C.

Coral Princess®

May 9, 23 6813, 6815 Jul 4, 18 6821, 6823
Jun 6, 20 6817, 6819 Aug 1, 15, 29 6825, 6827, 6829

Island Princess®

May 16, 30 2810, 2812 Jul 11, 25 2818, 2820 Sep 5 2826
Jun 13, 27 2814, 2816 Aug 8, 22 2822, 2824

Golden Princess®

May 19 5815 Jul 14, 28 5823, 5825 Aug 11, 25 5827, 5829
Jun 2, 16, 30 5817, 5819, 5821

Star Princess®

May 12, 26 9813, 9815 Jul 7, 21 9821, 9823 Sep 1 9828
Jun 9, 23 9817, 9819 Aug 4, 18 9825, 9827

Interior fares from* **HK\$17,933** Balcony fares from* **HK\$24,563**

TOUR NA7 LAND after CRUISE

Vancouver, B.C. to Fairbanks

Golden Princess®

May 19 5814 Jul 14, 28 5822, 5824 Aug 11, 25 5826, 5828
Jun 2, 16, 30 5816, 5818, 5820

Star Princess®

May 12, 26 9812, 9814 Jul 7, 21 9820, 9822 Sep 1 9828
Jun 9, 23 9816, 9818 Aug 4, 18 9824, 9826

Interior fares from* **HK\$15,749** Balcony fares from* **HK\$23,549**

*NA7 fares based on 5/12/18 departure on Star Princess; NB7 fares based on 5/9/18 departure on Coral Princess; Fares for other dates may vary. Taxes, Fees, and Port Expenses of up to HK\$2,106 are additional and subject to change. See page 1 for more details.

Tour NB7 on Star and Golden Princess® departures only, guests will travel via the Alaska Railroad between Fairbanks and Denali, instead of by motorcoach. The Denali/McKinley transit is entirely by motorcoach.

connoisseur cruisetours



Hosted by a tour director with most meals on land included and enhanced sightseeing, these vacations feature the highest level of service. Enjoy five to eight nights on land, visiting not only Denali but also other legendary locales like Copper River and/or the Kenai Peninsula.

- Two or more nights in the Denali area
- Options to visit the stunning Kenai Peninsula and/or epic Wrangell-St. Elias National Park
- Princess rail service
- Most meals included on land
- Stays in our exclusive Princess Wilderness Lodges
- Tour director on land tour
- Tundra Wilderness Tour into Denali National Park
- Sternwheeler Riverboat Cruise and Gold Dredge 8 Tour in Fairbanks (if applicable)



LOOK FOR
the Direct-to-the-Wilderness® rail symbol for itineraries featuring this exclusive service between our ships and our Denali-area lodges.



ALSO LOOK FOR
the Princess Rail symbol for itineraries including this service. It features beautiful Alaska scenery, plus our warm Princess service.


tour
O

12
nights

Connoisseur



TOUR OB5 LAND before CRUISE

DAY	DESTINATION
By Land 1	Anchorage – Explore the surprisingly metropolitan city of Anchorage by getting out to see the shops, restaurants and cultural attractions. You'll meet your tour director in the evening. Overnight at Hotel Captain Cook.
2	Anchorage/Mt. McKinley – Journey by motorcoach from Anchorage to your first Princess Lodge in the Denali area – Mt. McKinley Princess Wilderness Lodge. Incredible views of the 20,310-foot mountain await you. Overnight at Mt. McKinley Princess Wilderness Lodge (B,D)
3	Mt. McKinley – You have a full day to spend however you choose. Visit the tour desk for ideas about excursions. Or, explore the nature trails for sweeping vistas. Overnight at Mt. McKinley Princess Wilderness Lodge. (B,D)
4	Mt. McKinley/Denali – Arrive by motorcoach at Denali Princess Wilderness Lodge – set above the Nenana River Canyon – for a two-night stay. Overnight at Denali Princess Wilderness Lodge. (B,D)
5	Denali – The morning begins with an in-depth Tundra Wilderness Tour highlighting many of the most intriguing natural facts about Denali National Park. Tonight, you'll enjoy the festive "Music of Denali" dinner theater. Overnight at Denali Princess Wilderness Lodge. (B, L, D)
6	 Denali/Whittier/Embark Ship – Enjoy a scenic rail journey through some of the best wilderness on the Direct-to-the-Wilderness rail toward Whittier, where your cruise ship awaits. (B,L)
By Sea	Southbound Voyage of the Glaciers Cruise
7	Cruising Hubbard Glacier
8	Cruising Glacier Bay National Park
9	Skagway
10	Juneau
11	Ketchikan
12	Cruising the Inside Passage
13	Vancouver, B.C., Canada

B = Breakfast L = Lunch D = Dinner



2018 DEPARTURES

TOUR OB5 LAND before CRUISE

Anchorage to Vancouver, B.C.

Coral Princess®

May 11, 25 6813, 6815 Jul 6, 20 6821, 6823

Jun 8, 22 6817, 6819 Aug 3, 17, 31 6825, 6827, 6829

Golden Princess®

May 21 5815 Jul 2, 16, 30 5821, 5823, 5825

Jun 4, 18 5817, 5819 Aug 13, 27 5827, 5829

Island Princess®

May 18 2810 Jul 13, 27 2818, 2820 Aug 10, 24 2822, 2824

Jun 1, 15, 29 2812, 2814, 2816 Sep 7 2826, 2828

Interior fares from* **HK\$20,039** Balcony fares from* **HK\$26,669**

*OB5 fares based on 5/11/18 departure on Coral Princess®. Fares for other dates may vary. Taxes, Fees, and Port Expenses of up to HK\$2,067 are additional and subject to change. See page 1 for more details.

tour
P

13
nights

Connoisseur



TOUR PB6 LAND before CRUISE

DAY	DESTINATION
By Land	
1	Fairbanks – Alaska’s “Golden Heart City” of Fairbanks is a great introduction to the heart of this unique state. You’ll meet your tour director in the evening. Overnight at Fairbanks Princess Riverside Lodge.
2	Fairbanks – Enjoy a Gold Dredge 8 Tour in the morning and then a Sternwheeler Riverboat Cruise in the afternoon. You have the rest of the day to further explore the town. Overnight at Fairbanks Princess Riverside Lodge. (B, L, D)
3	Fairbanks/Denali – Arrive by motorcoach at Denali Princess Wilderness Lodge – set above the Nenana River Canyon – for a two-night stay. Tonight, you’ll enjoy the festive “Music of Denali” dinner theater. Overnight at Denali Princess Wilderness Lodge. (B, D)
4	Denali – The morning begins with an in-depth Tundra Wilderness Tour highlighting many of the most intriguing natural facts about Denali National Park. Overnight at Denali Princess Wilderness Lodge. (B, L, D)
5	Denali/Mt. McKinley – From the Denali lodge, enjoy a scenic motorcoach ride to Mt. McKinley Princess Wilderness Lodge, a relaxing retreat tucked into the forest in the shadow of the great Denali. Overnight at Mt. McKinley Princess Wilderness Lodge. (B, D)
6	Mt. McKinley – You have a full day to spend however you choose. Visit the tour desk for ideas about excursions. Or, explore the nature trails for sweeping vistas. Overnight at Mt. McKinley Princess Wilderness Lodge. (B, D)
7	Mt. McKinley/Whittier/Embark Ship – Our Direct-to-the-Wilderness rail service takes you on a scenic journey as you head toward Whittier to begin your cruise. (B, L)
By Sea	
	Southbound Voyage of the Glaciers Cruise
8	Cruising Hubbard Glacier
9	Cruising Glacier Bay National Park
10	Skagway
11	Juneau
12	Ketchikan
13	Cruising the Inside Passage
14	Vancouver, B.C., Canada

B = Breakfast L = Lunch D = Dinner

OR enjoy this cruisetour in reverse with your land tour after your cruise:

TOUR PA6 LAND after CRUISE

- DAY 1 Vancouver, B.C., Canada
- DAY 2 Cruising the Inside Passage
- DAY 3 Ketchikan*
- DAY 4 Juneau
- DAY 5 Skagway
- DAY 6 Cruising Glacier Bay National Park
- DAY 7 Cruising College Fjord
- DAY 8 Disembark Ship/Whittier/Mt. McKinley
- DAY 9 Mt. McKinley
- DAY 10 Mt. McKinley/Denali
- DAY 11 Denali
- DAY 12 Denali/Fairbanks
- DAY 13 Fairbanks
- DAY 14 Fly home from Fairbanks

2018 DEPARTURES

TOUR PB6 LAND before CRUISE

Fairbanks to Vancouver, B.C.

Coral Princess®	May 10, 24 6813, 6815	Jul 5, 19 6821, 6823	
	Jun 7, 21 6817, 6819	Aug 2, 16, 30 6825, 6827, 6829	
Golden Princess®	May 20 5815	Jul 1, 15, 29 5821, 5823, 5825	
	Jun 3, 17 5817, 5819	Aug 12, 26 5827, 5829	
Island Princess®	May 17, 31 2810, 2812	Jul 12, 26 2818, 2820	Sep 6 2826
	Jun 14, 28 2814, 2816	Aug 9, 23 2822, 2824	
Star Princess®	May 13, 27 9813, 9815	Jul 8, 22 9821, 9823	Sep 2 9829
	Jun 10, 24 9817, 9819	Aug 5, 19 9825, 9827	

Interior fares from* **HK\$23,003** Balcony fares from* **HK\$29,633**

TOUR PA6 LAND after CRUISE

Vancouver, B.C. to Fairbanks

Coral Princess®	May 9, 23 6812, 6814	Jul 4, 18 6820, 6822	
	Jun 6, 20 6816, 6818	Aug 1, 15, 29 6824, 6826, 6828	
Golden Princess®	May 19 5814	Jul 14, 28 5822, 5824	Aug 11, 25 5826, 5828
	Jun 2, 16, 30 5816, 5818, 5820		
Island Princess®	May 16, 30 2809, 2811	Jul 11, 25 2817, 2819	Sep 5 2825
	Jun 13, 27 2813, 2815	Aug 8, 22 2821, 2823	
Star Princess®	May 12, 26 9812, 9814	Jul 7, 21 9820, 9822	Sep 1 9828
	Jun 9, 23 9816, 9818	Aug 4, 18 9824, 9826	

Interior fares from* **HK\$19,649** Balcony fares from* **HK\$26,279**

*PA6 fares based on 5/9/18 departure on Coral Princess®; PB6 fares based on 5/10/18 departure on Coral Princess®. Fares for other dates may vary. Taxes, Fees, and Port Expenses of up to HK\$2,067 are additional and subject to change. See page 1 for more details.

*Icy Strait Point replaces Ketchikan on Island Princess® cruises.

tour
Q

14
nights

Connoisseur



TOUR QB7 LAND before CRUISE

DAY	DESTINATION
By Land 1	Anchorage - Arrive in Anchorage and get settled in your hotel for an overnight stay. Overnight at Hotel Captain Cook.
2	Anchorage/Copper River - This morning, board your motorcoach and settle in for a drive to the Copper River Princess Wilderness Lodge. Overnight at Copper River Princess Wilderness Lodge. (B, D)
3	Copper River - Enjoy a full day of leisure. Choose from many optional excursions that let you explore America's largest national park - Wrangell-St. Elias. Overnight at Copper River Princess Wilderness Lodge. (B, D)
4	Copper River/Fairbanks - Continue your journey by motorcoach to Fairbanks, Alaska's "Golden Heart" city. Enjoy your evening at leisure. Overnight at Fairbanks Princess Riverside Lodge. (B, D)
5	Fairbanks - A full day in Fairbanks gives you time to get a feel for the unique culture and history of the region. You'll take a cruise on a Sternwheeler Riverboat down the Chena River then enjoy a Gold Dredge 8 tour. The evening is at leisure. Overnight at Fairbanks Princess Riverside Lodge. (B, L, D)
6	Fairbanks/Denali - Head to Denali National Park via motorcoach. Explore the park on a Tundra Wilderness Tour. Breakfast and dinner included. Overnight at Denali Princess Wilderness Lodge. (B, D)
7	Denali/Mt. McKinley - A scenic drive between our two lodges culminates in incredible views of Denali. Overnight at Mt. McKinley Princess Wilderness Lodge. (B, D)
8	Mt. McKinley/Whittier/Embark Ship - Transfer to the historic town of Talkeetna to board the Direct-to-the-Wilderness Rail for the journey to your waiting ship. (B, L)
By Sea	Southbound Voyage of the Glaciers Cruise
9	Cruising Hubbard Glacier
10	Cruising Glacier Bay National Park
11	Skagway
12	Juneau
13	Ketchikan
14	Cruising the Inside Passage
15	Vancouver, B.C., Canada

B = Breakfast L = Lunch D = Dinner



OR enjoy this cruisetour in reverse with your land tour after your cruise:

TOUR QA7 LAND after CRUISE

- DAY 1 Vancouver, B.C., Canada
- DAY 2 Cruising the Inside Passage
- DAY 3 Ketchikan
- DAY 4 Juneau
- DAY 5 Skagway
- DAY 6 Cruising Glacier Bay National Park
- DAY 7 Cruising College Fjord
- DAY 8 Disembark Ship/Whittier/Mt. McKinley
- DAY 9 Mt. McKinley/Denali
- DAY 10 Denali/Fairbanks
- DAY 11 Fairbanks
- DAY 12 Fairbanks/Copper River
- DAY 13 Copper River
- DAY 14 Copper River/Anchorage
- DAY 15 Fly home from Anchorage

2018 DEPARTURES

TOUR QB7 LAND before CRUISE

Anchorage to Vancouver, B.C.

Star Princess®

May 12, 26 9813, 9815 Jul 7, 21 9821, 9823 Sep 1 9829

Jun 9, 23 9817, 9819 Aug 4, 18 9825, 9827

Interior fares from* HK\$24,563 Balcony fares from* HK\$32,363

TOUR QA7 LAND after CRUISE

Vancouver, B.C. to Anchorage

Star Princess®

May 12, 26 9812, 9814 Jul 7, 21 9820, 9822

Jun 9, 23 9816, 9818 Aug 4, 18 9824, 9826

Interior fares from* HK\$21,443 Balcony fares from* HK\$29,243

*QA7 fares based on 5/12/18 departure on Star Princess®. QB7 fares based on 5/12/18 departure on Star Princess®. Fares for other dates may vary. Taxes, Fees, and Port Expenses of up to HK\$1943 are additional and subject to change. See page 1 for more details.

tour
R

15
nights

Connoisseur



TOUR RB8 LAND before CRUISE

DAY	DESTINATION
By Land 1	Fairbanks – Alaska’s “Golden Heart City” is a great introduction to the heart of this unique state. Meet your Tour Director and fellow traveling companions. Overnight at Fairbanks Princess Riverside Lodge.
2	Fairbanks – Take a Gold Dredge 8 Tour, then enjoy a cruise on a Sternwheeler Riverboat. Overnight at Fairbanks Princess Riverside Lodge. (B, L, D)
3	Fairbanks/Denali – Head to Denali National Park via motorcoach. Choose from activities including a husky homestead tour, fly fishing or a glacier landing via helicopter. Overnight at Denali Princess Wilderness Lodge. (B, D)
4	Denali – Explore Denali National Park on a Tundra Wilderness Tour. Overnight at Denali Princess Wilderness Lodge. (B, L, D)
5	Denali/Mt. McKinley – The journey by Princess Rail to Talkeetna is unforgettable. Settle at your lodge and enjoy the views. Overnight at Mt. McKinley Princess Wilderness Lodge. (B, D)
6	Mt. McKinley/Kenai – Next, you’ll head by motorcoach across the stunning Kenai Peninsula to Cooper Landing. Overnight at Kenai Princess Wilderness Lodge. (B, D)
7	Kenai – Explore Kenai Fjords National Park, spend the afternoon river rafting or go fishing. Overnight at Kenai Princess Wilderness Lodge. (B, D)
8	Kenai – Today you have another full day at leisure to explore the splendors of Kenai. Overnight at Kenai Princess Wilderness Lodge. (B, D)
9	Kenai/Whittier/Embark Ship – Arrive in Whittier via motorcoach, and embark and sail this evening. (B)
By Sea	Southbound Voyage of the Glaciers Cruise
10	Cruising Hubbard Glacier
11	Cruising Glacier Bay National Park
12	Skagway
13	Juneau
14	Ketchikan
15	Cruising the Inside Passage
16	Vancouver, B.C., Canada

B = Breakfast L = Lunch D = Dinner



2018 DEPARTURES

TOUR RB8 LAND before CRUISE

Fairbanks to Vancouver, B.C.

Coral Princess®

May 8, 22 6813, 6815 Jul 3, 17, 31 6821, 6823, 6825
Jun 5, 19 6817, 6819 Aug 14, 28 6827, 6829

Golden Princess®

May 18 5815 Jul 13, 27 5823, 5825 Aug 10, 24 5827, 5829
Jun 1, 15, 29 5817, 5819, 5821

Island Princess®

May 15, 29 2810, 2812 Jul 10, 24 2818, 2820 Sep 4 2826
Jun 12, 26 2814, 2816 Aug 7, 21 2822, 2824

Star Princess®

May 11, 25 9813, 9815 Jul 6, 20 9821, 9823
Jun 8, 22 9817, 9819 Aug 3, 17, 31 9825, 9827, 9829

Interior fares from* **HK\$25,889** Balcony fares from* **HK\$32,519**

*RB8 fares based on 5/8/18 departure on Coral Princess®. Fares for other dates may vary. Taxes, Fees, and Port Expenses of up to HK\$2,184 are additional and subject to change. See page 1 for more details.

Tour RB8 on Coral Princess® and Island Princess® departures only, guests will travel via the Alaska Railroad between Fairbanks and Denali, instead of by motorcoach. The Denali/McKinley transit is entirely by motorcoach.

tour
S

15
nights

Connoisseur



TOUR SB8 LAND before CRUISE

DAY	DESTINATION
By Land	
1	Fairbanks – Alaska’s “Golden Heart City” is a great introduction to the heart of this unique state. Meet your Tour Director and fellow traveling companions. Overnight at Fairbanks Princess Riverside Lodge.
2	Fairbanks – Take a Gold Dredge 8 Tour and cruise on an authentic Sternwheeler Riverboat down the Chena River. Overnight at Fairbanks Princess Riverside Lodge. (B, L, D)
3	Fairbanks/Denali – Set out for Denali National Park via scenic rail. Enjoy dinner at the King Salmon Restaurant this evening. Overnight at Denali Princess Wilderness Lodge. (B, D)
4	Denali – Start your morning with a breakfast buffet. Explore Denali National Park on a Tundra Wilderness Tour. Enjoy the Music of Denali Dinner Theater this evening. Overnight at Denali Princess Wilderness Lodge. (B, L, D)
5	Denali/Copper River – Sightsee by motorcoach on the Denali Highway to Copper River Princess Wilderness Lodge. Overnight at Copper River Princess Wilderness Lodge. (B, D)
6	Copper River – Attractions near Copper River Princess Wilderness Lodge include massive Wrangell-St. Elias National Park. Overnight at Copper River Princess Wilderness Lodge. (B, D)
7	Copper River/Kenai – Next, you’ll head by motorcoach across the stunning Kenai Peninsula to Cooper Landing and Kenai Princess Wilderness Lodge. Overnight at Kenai Princess Wilderness Lodge. (B, D)
8	Kenai – Explore Kenai Fjords National Park, and spend the afternoon rafting or fishing. Overnight at Kenai Princess Wilderness Lodge. (B, D)
9	Kenai/Whittier/Embark Ship – Arrive in Whittier via motorcoach, and embark and sail this evening. (B)
By Sea	
10	Southbound Voyage of the Glaciers Cruise Cruising Hubbard Glacier
11	Cruising Glacier Bay National Park
12	Skagway
13	Juneau
14	Ketchikan
15	Cruising the Inside Passage
16	Vancouver, B.C., Canada

B = Breakfast L = Lunch D = Dinner



OR enjoy this cruisetour in reverse with your land tour after your cruise:

TOUR SA8 LAND after CRUISE

- DAY 1 Vancouver, B.C., Canada
- DAY 2 Cruising the Inside Passage
- DAY 3 Ketchikan
- DAY 4 Juneau
- DAY 5 Skagway
- DAY 6 Cruising Glacier Bay National Park
- DAY 7 Cruising College Fjord
- DAY 8 Disembark Ship/Whittier/Kenai
- DAY 9 Kenai
- DAY 10 Kenai/Copper River
- DAY 11 Copper River
- DAY 12 Copper River/Denali
- DAY 13 Denali
- DAY 14 Denali/Fairbanks
- DAY 15 Fairbanks
- DAY 16 Fly home from Fairbanks

2018 DEPARTURES

TOUR SB8 LAND before CRUISE

Fairbanks to Vancouver, B.C.

Golden Princess®

May 18 5815 Jul 13, 27 5823, 5825 Aug 10, 24 5827, 5829
Jun 1, 15, 29 5817, 5819, 5821

Interior fares from* HK\$27,059 Balcony fares from* HK\$34,469

TOUR SA8 LAND after CRUISE

Vancouver, B.C. to Fairbanks

Golden Princess®

May 19 5814 Jul 14, 28 5822, 5824 Aug 11, 25 5826, 5828
Jun 2, 16, 30 5816, 5818, 5820

Interior fares from* HK\$24,563 Balcony fares from* HK\$32,363

*SA8 fares based on 5/19/18 departure on Golden Princess®. SB8 fares based on 5/18/18 departure on Golden Princess®. Fares for other dates may vary. Taxes, Fees, and Port Expenses of up to HK\$2,028 are additional and subject to change. See page 1 for more details.

Guests will travel via the Alaska Railroad between Fairbanks and Denali.

tour
1

14
nights

Heart of the Rockies Plus Rail



TOUR 1A LAND before CRUISE

DAY	DESTINATION
By Land 1	Calgary – Arrive in Calgary and enjoy a welcome reception hosted by your Tour Director. Overnight at Fairmont Palliser Hotel.
2	Calgary/Banff – Drive west to the mountain resort of Banff. Enjoy a sightseeing tour which will highlight Bow Falls, the Hoodoo Lookout, Lake Minnewanka and Surprise Corner. Overnight at Fairmont Banff Springs Hotel. (B, D)
3	Banff – Enjoy the day at your leisure exploring Banff. Overnight at Fairmont Banff Springs Hotel. (B, D)
4	Banff/Lake Louise – En route to Lake Louise, your tour will take you to Moraine Lake, located in the Valley of the Ten Peaks. Overnight at Fairmont Chateau Lake Louise. (B, D)
5	Lake Louise/Jasper – Highway 93, known as the Icefield Parkway, is one of the most scenic drives in the world. Stop at the Columbia Icefield and shuttle to the Athabasca Glacier for a guided tour onto the surface of the glacier. Overnight at Fairmont Jasper Park Lodge. (B, L, D)
6	Jasper/Kamloops – Board the Rocky Mountaineer train. Your SilverLeaf rail adventure takes you from Jasper to Kamloops. Overnight at a Kamloops Hotel. (B, L)
7	Kamloops/Vancouver – Travel through the fertile Fraser Delta en route to Vancouver. Breakfast, lunch and snacks will be served at your seat and are included while aboard the Rocky Mountaineer. Transfer from the train station to your hotel and enjoy a farewell dinner with your Tour Director. Overnight at Four Seasons Vancouver Hotel. (B, L, D)
8	Vancouver/Embark Ship – Transfer to your Princess ship.
By Sea	Northbound Voyage of the Glaciers Cruise
9	Cruising the Inside Passage
10	Ketchikan
11	Juneau
12	Skagway
13	Cruising Glacier Bay National Park
14	Cruising College Fjord
15	Anchorage (Whittier)

B = Breakfast L = Lunch D = Dinner



2018 DEPARTURES

TOUR 1A LAND before CRUISE

Calgary to Anchorage

Star Princess®

May 5, 19 9812, 9814

Jul 14, 28 9822, 9824

Jun 2, 16, 30 9816, 9818, 9820

Aug 11, 25 9826, 9828

Golden Princess®

May 12, 26 5814, 5816

Jul 7, 21 5822, 5824

Jun 9, 23 5818, 5820

Aug 4, 18 5826, 5828

Interior fares from* HK\$40,553

Balcony fares from* HK\$48,353

TOUR 1R LAND before CRUISE

Calgary to Vancouver, B.C.

Star Princess®

Apr 28 9811

Interior fares from* HK\$42,113

Balcony fares from* HK\$46,403

*IA fares based on 5/5/18 departure on Star Princess. Fares for other dates may vary. Taxes, Fees, and Port Expenses of up to HK\$2,418 are additional and subject to change. For Tour 1R, Taxes, Fees, and Port Expenses of up to HK\$2,262 are additional and subject to change. See page 1 for more details.

EVEN THE EXPERTS SAY WE ARE THE EXPERTS



extra savings for our valued past guests

LIMITED-TIME OFFER!

Book any of these vacations to enjoy
Princess Cruises Captain's Circle™ Launch Savings

- An extra savings of up to US\$75 per person*
- Enjoy a 2-for-1 deposit (10% of cruise fare)*

*Princess Cruises Captain's Circle Launch Savings of up to US\$75 per person discount is applicable in all categories and combinable only with Launch Fares and Group Fares. Specific discount amounts vary by itinerary and cruise length. Regional and other past guest promotions or "new booking only" promotions are not combinable with the discount. Princess Cruises Captain's Circle Launch Savings is not applicable to third- and fourth-berth guests. Reduced deposit offer is 10% per person and does not apply to third- and fourth-berth guests. Reduced deposit is not combinable with other reduced deposit offers. Call (852) 2952 8088 for details. Offer expires August 31, 2017, for 2018 Alaska sailings. Promotion code is ZPP.

Book Now:



Your Travel Agent



www.princess.com



(852) 2952 8088



Suite 1207, Tower 1, The Gateway, Harbour City,
25 Canton Road, Tsim Sha Tsui, Kowloon
License No. 353772



HONG KONG RESIDENTS: Fares are shown in HK dollars.
Ask your Travel Agent or call Princess for details.

©2017, Princess Cruise Lines, Ltd. Ships of Bermudan and British registry.

YOUR PROFESSIONAL TRAVEL AGENT: