

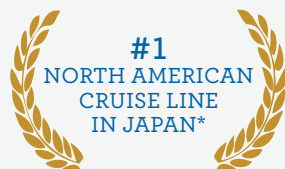


PRINCESS CRUISES

come back new*

2018

japan



enter a world of wonder

From city skyscrapers that soar over ancient temples to tranquil garden retreats, discover Japan's alluring culture, profoundly beautiful natural attractions and historic sites steeped in tradition... allowing you to truly come back new.®



extra savings for our valued past guests

LIMITED-TIME OFFER!

Book any of these vacations to enjoy Princess Cruises Captain's Circle Launch Savings

- An extra savings of up to US\$200 per person*
- Enjoy a 2-for-1 deposit (10% of cruise fare)*

*Princess Cruises Captain's Circle Launch Savings of up to US\$200 per person discount is applicable in all categories and combinable only with Launch Fares and Group Fares. Specific discount amounts vary by itinerary and cruise length. Regional and other past guest promotions or "new booking only" promotions are not combinable with the discount. Princess Cruises Captain's Circle Launch Savings is not applicable to third- and fourth-berth guests. Reduced deposit offer is 10% per person and does not apply to third- and fourth-berth guests. Reduced deposit is not combinable with other reduced deposit offers. Call (852) 2952 8088 for details. Offer expires August 31, 2017 for 2018 sailings. Promotion code is ZPP.

sensational celebrations

Set sail on a voyage timed perfectly with festivals throughout Japan. From the deck of your ship, watch the skies light up in a kaleidoscope of colors during summer's Kumano Fireworks Festival. Marvel over the illuminated float parade in the Aomori Nebuta Festival and the thousands of lanterns suspended from bamboo poles in the Akita Kanto procession.



artistic influences

Gain an insider's perspective of Japan's complex artistic traditions, from classical dance, music and architecture to kyo-yuzen silk painting in Kyoto. Culinary arts may feature an intricate tea ceremony in Shimizu, sipping shochu in a Kagoshima brewery or savoring fresh seafood at Tsukiji Fish Market in Tokyo, among many exciting excursions available.

special sights

Each journey transports you toward UNESCO World Heritage Sites, such as ancient Kyoto, Okinawa's Shurijo Castle and the majestic Shirakami Mountains from Aomori. Your connection to this storied land deepens as you explore both iconic cities and hidden villages.



more ashore

Our itineraries are crafted to offer endless opportunities to experience the sights, sounds and flavors of Japan. With several port calls that are **LATE NIGHT** (departing 9pm or later) you can delve into each destination and spend more time celebrating the awe-inspiring festivals.



SHARE YOUR STORY

Connect with Princess and fellow guests via Facebook, YouTube, Instagram, Twitter, Pinterest and Google+. Share stories of your Princess adventures, watch videos and much more.



#comebacknew
@princesscruises

*#1 International Cruise Line in Japan by Japan's CRUISE Magazine Readers' Poll.

COVER: Fushimi Inari Shrine, Kyoto. OPPOSITE PAGE: Itsukushima Shrine, Hiroshima; Aomori Hirosaki Castle. THIS PAGE, IMAGES CLOCKWISE FROM TOP LEFT: Aomori Nebuta Festival ©Yasufumi Nishi/@JNTO; Asakusa Temple, Tokyo; Aomori Nebuta Festival ©Yasufumi Nishi/@JNTO; Arashiyama Bamboo Grove, Kyoto; fresh sushi at Tsukiji Fish Market in Tokyo.

explore the islands



HOKKAIDO

Japan's second-largest island, located at the country's far north near Russia, Hokkaido is known for spectacular mountains and volcanic plateaus. Explore the city of Hakodate via aerial tram, or explore the canals of the port city Otaru.



KYUSHU

Kyushu offers a treasure trove of historical and natural highlights in cities including Kagoshima, a mountainous region of hot springs and geysers and the site of the final defeat of the Satsuma samurai.



SHIKOKU

The island of Shikoku charms with its port cities like Kochi and Tokushima, well-preserved castles, local fare and a pilgrimage route of 88 temples and other sacred sites that follows in the footsteps of famous Buddhist Kobo Daishi.



RYUKYU ISLANDS

This archipelago south of Japan's main islands includes Okinawa, a trading center and the birthplace of karate, and Ishigaki, a tropical paradise known for its turquoise waters, palm forests and jungle-covered mountains.

Your cruise transports you throughout the archipelago of Japan to reveal a unique tapestry of cultures. Each of the four main islands of Japan is a study in contrasts: tranquil retreats lie just outside cities where skyscrapers soar over ancient temples and shrines. From being dazzled by the panoramic views of iconic Mount Fuji to exploring the exquisite temples of Kyoto, Princess® is your ultimate guide to this incredibly diverse country.

JNTO Princess is a proud partner of the Japan National Tourism Organization



FLAVORS OF JAPAN

The exquisite tastes of Japan will come to life as you attend a tea ceremony in Shimizu, visit a shochu brewery in Kagoshima, partake in an oyster lunch in Kushiro or one of the many other delicious excursions available.

KYO-YUZEN SILK PAINTING

Introduced to Japan in the 8th century, the yuzen dyeing technique has evolved as an integral part of Kyoto's cultural life. This tradition utilizes a variety of colors to dye kimonos in picturesque designs.



FESTIVAL SEASON

Renowned worldwide for its traditional festivals, many of our Japan itineraries are designed to coincide with some of the most popular celebrations throughout the country. On select sailings you can experience the mesmerizing spectacle known as the Awa Odori Dance Festival in Tokushima or get an up-close look at the exquisite parade floats used in Aomori's annual Nebuta Festival.



HONSHU

The country's largest island is also home to its largest cities, including Tokyo, Kyoto and Osaka. Bustling cityscapes contrast with serene temples, offering a multitude of opportunities to explore.

CULTURAL IMMERSION

Authentically experience this welcoming culture through excursions led by destination experts and locals, giving you an insider's view into life in Japan. Enjoy performances of traditional Japanese dance and music. Plunge into natural hot springs, wind through temples and art museums or stroll through vibrant seafood markets. The country is yours to discover, with the help of Princess.


spring flowers cruises

Japan's gardens and parks are awash in colors when spring flowers are in full bloom. Stroll the magnificent gardens of Kenrokuen in Kanazawa, and wander under canopies of flowers in Hakodate, where a late departure allows ample time to ascend Mt. Hakodate by aerial tram for breathtaking views of the city at night.

Spring Flowers

Roundtrip from Tokyo

7 days



Tokyo (Yokohama) > Kanmon Straits scenic cruising > Busan > Sakaiminato > Tsuruga > Akita > Tokyo (Yokohama)

Interior fares from*	Balcony fares from*	Mini-Suite fares from*	Club Class fares from*	Suite fares from*
HK\$9,587	HK\$14,813	HK\$18,245	HK\$23,549	HK\$33,533

2018 DEPARTURE | *Diamond Princess*[®]
Apr 13 FRI M809

*Taxes, Fees and Port Expenses of up to HK\$780 are additional and subject to change. See page 12 for more details.


fall foliage cruises

Brilliant red and gold hues are the hallmarks of an autumn voyage that transports you from Japan's ancient shrines and temples to the shores of South Korea and Taiwan. Step foot on sacred grounds in Kyoto, home to an incredible variety of breathtaking sites, and revel in the dazzling cityscapes of Busan and Taipei where ancient relics meet modern attractions.

Spring Flowers

Roundtrip from Tokyo

8 days



Tokyo (Yokohama) > Kanmon Straits scenic cruising > Busan > Sakaiminato > Kanazawa > Hakodate LATE NIGHT > Aomori > Tokyo (Yokohama)

Interior fares from*	Balcony fares from*	Mini-Suite fares from*	Club Class fares from*	Suite fares from*
HK\$10,913	HK\$17,075	HK\$20,507	HK\$26,513	HK\$38,213


2018 DEPARTURE | *Diamond Princess*[®]
Apr 20 FRI M810

*Taxes, Fees and Port Expenses of up to HK\$936 are additional and subject to change. See page 12 for more details.

Spring Flowers & Golden Week

Tokyo to Kobe

12 days



Tokyo (Yokohama) > Kanmon Straits scenic cruising > Busan > Sakaiminato > Kanazawa > Hakodate LATE NIGHT > Aomori > Tokyo (Yokohama) > Kanmon Straits scenic cruising > Busan > Kanmon Straits scenic cruising > Kobe

Interior fares from*	Balcony fares from*	Mini-Suite fares from*	Club Class fares from*	Suite fares from*
HK\$16,373	HK\$26,591	HK\$35,873	HK\$46,481	HK\$65,513

2018 DEPARTURE | *Diamond Princess*[®]
Apr 20 FRI M810A

*Taxes, Fees and Port Expenses of up to HK\$1,326 are additional and subject to change. See page 12 for more

Japan Fall Foliage

Roundtrip from Tokyo

8 days



Tokyo (Yokohama) > Toba > Osaka (for Kyoto) > Iwakuni LATE NIGHT > Kanmon Straits scenic cruising > Hakata (Fukuoka) > Busan LATE NIGHT > Kanmon Straits scenic cruising > Nagoya > Tokyo (Yokohama)

Interior fares from*	Balcony fares from*	Mini-Suite fares from*	Club Class fares from*	Suite fares from*
HK\$10,913	HK\$17,075	HK\$20,507	HK\$26,513	HK\$38,213

2018 DEPARTURES | *Diamond Princess*[®]
Oct 8 MON M835

*Taxes, Fees and Port Expenses of up to HK\$858 are additional and subject to change. See page 12 for more details.

summer festival cruises

Join extravagant festivals and celebrations when you sail in summer and stay longer in select ports. Oversized floats festooned with famed characters light up the Aomori Nebuta Festival. The floating Kumano Fireworks Festival is one of the largest fireworks displays in Japan, culminating in a dazzling spectacle of sights, sounds and colors.

Northern Japan with Nebuta Festival

Roundtrip from Tokyo

8 days

more ashore

Tokyo (Yokohama) > Ishinomaki > Hakodate **LATE NIGHT** > Vladivostok > Aomori **LATE NIGHT** > Tokyo (Yokohama)

Interior fares from*	Balcony fares from*	Mini-Suite fares from*	Club Class fares from*	Suite fares from*
HK\$12,395	HK\$18,557	HK\$24,563	HK\$31,661	HK\$42,113

2018 DEPARTURE | *Diamond Princess*[®]
Jul 27 FRI M825

*Taxes, Fees and Port Expenses of up to HK\$858 are additional and subject to change. See page 12 for more details.

Circle Japan with Nebuta & Summer Festivals

Roundtrip from Tokyo

11 days

more ashore

Tokyo (Yokohama) > Akita **LATE NIGHT** > Aomori **LATE NIGHT** > Sakaiminato > Busan > Kanmon Straits scenic cruising > Kochi **LATE NIGHT** > Tokushima **LATE NIGHT** > Tokyo (Yokohama)

Interior fares from*	Balcony fares from*	Mini-Suite fares from*	Club Class fares from*	Suite fares from*
HK\$16,763	HK\$25,265	HK\$31,427	HK\$40,475	HK\$57,713

2018 DEPARTURE | *Diamond Princess*[®]
Aug 4 SAT M826

*Taxes, Fees and Port Expenses of up to HK\$1,053 are additional and subject to change. See page 12 for more details.

Japan Explorer with Kumano Fireworks

Roundtrip from Tokyo

7 days

more ashore

Tokyo (Yokohama) > Shimizu **LATE NIGHT** > Kumano (scenic cruising for Kumano Fireworks Festival viewing) > Kochi > Kanmon Straits scenic cruising > Busan > Yatsushiro > Tokyo (Yokohama)

Interior fares from*	Balcony fares from*	Mini-Suite fares from*	Club Class fares from*	Suite fares from*
HK\$10,913	HK\$16,139	HK\$22,145	HK\$28,541	HK\$37,433

2018 DEPARTURE | *Diamond Princess*[®]
Aug 15 WED M827

*Taxes, Fees and Port Expenses of up to HK\$624 are additional and subject to change. See page 12 for more



more ashore See the sights during the day and experience the nightlife after dark with Late Night (9pm or later) calls.

hokkaido cruises

Japan's northernmost island appeals to travelers who crave both the rhythms of dynamic cities and natural attractions. Tour a whisky distillery in Otaru and the Sumo Champion Memorial Hall in Hakodate. Then behold nature's beauty in Kushiro, on Hokkaido's southern coast, where you'll encounter a national park boasting glimmering lakes and the endangered Japanese Crane.

Circle Hokkaido
Roundtrip from Tokyo

8 days



more ashore

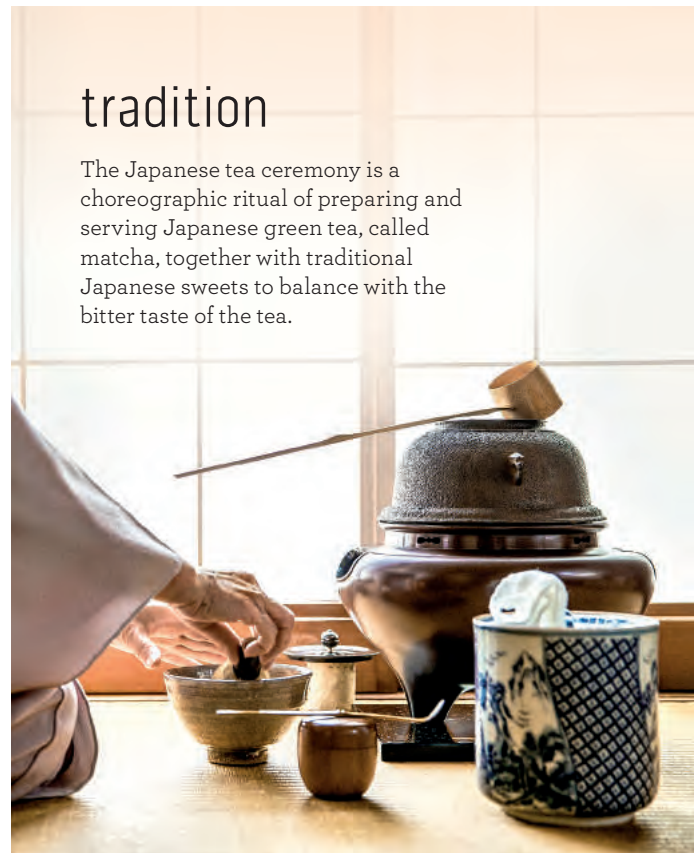
Tokyo (Yokohama) > Kushiro > Korsakov (Yuzhno-Sakhalinsk) > Otaru > Hakodate **LATE NIGHT > Tokyo (Yokohama)**

Interior fares from [*] HK\$10,211	Balcony fares from [*] HK\$16,373	Mini-Suite fares from [*] HK\$19,883	Club Class fares from [*] HK\$25,577	Suite fares from [*] HK\$37,433
---	--	---	---	--

2018 DEPARTURES | *Diamond Princess*[®]

Jul 3 TUE M822	Aug 27 MON M829	Sep 25 TUE M833
----------------	-----------------	-----------------

*Fares based on 9/25/18 sailing. Fares for other dates may vary. Taxes, Fees and Port Expenses of up to HK\$780 are additional and subject to change. See page 12 for more details.



sea of japan & circle japan cruises

A circumnavigation of the Japanese archipelago reveals the diversity of this storied land. Tokyo's skyscrapers and neon signs contrast with the small fishing port of Sakaiminato where delicious seafood is sourced straight from the Sea of Japan. Kagoshima offers historic highlights of legendary samurai as well as views of one of Japan's most active volcanoes.

Sea of Japan

Roundtrip from Tokyo

8 days

Tokyo (Yokohama) > Miyazaki (Aburatsubo) > Busan > Sakaiminato > Kanazawa > Sakata > Tokyo (Yokohama)

Interior fares from*	Balcony fares from*	Mini-Suite fares from*	Club Class fares from*	Suite fares from*
HK\$10,913	HK\$17,075	HK\$20,507	HK\$26,513	HK\$38,213

2018 DEPARTURES | *Diamond Princess*[®]
 Jun 25 MON M821 | Jul 11* WED M823

*Fares based on 6/25/18 sailing. Fares for other dates may vary. Taxes, Fees and Port Expenses of up to HK\$858 are additional and subject to change. See page 12 for more details.
 *Hiroshima & Kanmon Straits scenic cruising replace Miyazaki (Aburatsubo).

Circle Japan

Roundtrip from Tokyo

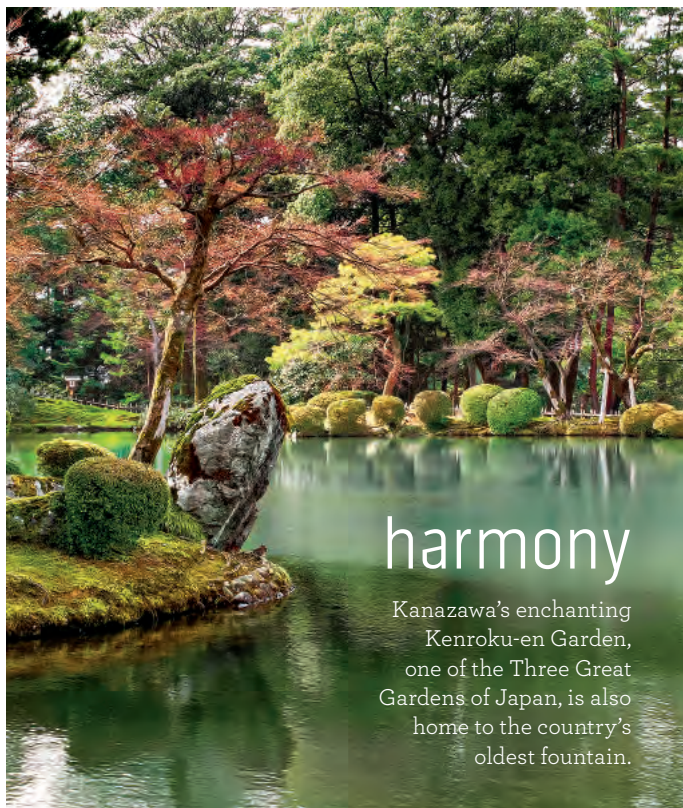
8 days

Tokyo (Yokohama) > Ishinomaki > Hakodate LATE NIGHT > Akita > Busan > Kagoshima > Tokyo (Yokohama)

Interior fares from*	Balcony fares from*	Mini-Suite fares from*	Club Class fares from*	Suite fares from*
HK\$11,537	HK\$17,699	HK\$23,783	HK\$30,647	HK\$41,333

2018 DEPARTURES | *Diamond Princess*[®]
 Sep 4 TUE M830 | Sep 17 MON M832

*Taxes, Fees and Port Expenses of up to HK\$819 are additional and subject to change. See page 12 for more details.



harmony

Kanazawa's enchanting Kenrokuen Garden, one of the Three Great Gardens of Japan, is also home to the country's oldest fountain.

more ashore

See the sights during the day and experience the nightlife after dark with Late Night (9pm or later) calls.

Japan Explorer

Roundtrip from Kobe

7 days

Kobe > Kochi > Hiroshima > Miyazaki (Aburatsubo) > Kagoshima > Busan LATE NIGHT > Kanmon Straits scenic cruising > Kobe

Interior fares from*	Balcony fares from*	Mini-Suite fares from*	Club Class fares from*	Suite fares from*
HK\$9,587	HK\$14,813	HK\$18,245	HK\$23,549	HK\$33,533

2018 DEPARTURES | *Diamond Princess*[®]
 May 6 SUN M813 | May 20* SUN M815

*Taxes, Fees and Port Expenses of up to HK\$741 are additional and subject to change. See page 12 for more details.
 *Beppu replaces Miyazaki (Aburatsubo).

southern islands cruises

Japan is yours to discover on these extraordinary sailings. Take time to explore Okinawa, the largest of the Ryukyu Islands and a pivotal point in World War II history, where castles and ancient crafts have withstood the test of time. Sail toward Ishigaki and the shores of Taiwan before culminating in Kobe or Tokyo where you'll say "kampai!" before sampling delicate sake, Japanese rice wine.

culture

In Okinawa, you'll notice the abundant *shisa* statues, a central part of the culture. A cross between a lion and a dog, these small statues can be found on roofs and building entrances.

Often in pairs, the closed-mouth female is said to keep in good spirits, while the open-mouthed male scares evil spirits away.



Southern Islands

Roundtrip from Kobe

7 days



Kobe > Okinawa > Ishigaki > Taipei (Keelung) > Kobe

Interior fares from*	Balcony fares from*	Mini-Suite fares from*	Club Class fares from*	Suite fares from*
HK\$9,587	HK\$14,813	HK\$18,245	HK\$23,549	HK\$33,533

2018 DEPARTURES | *Diamond Princess*[®]
 May 13 SUN M814 | May 27 SUN M816 | Jun 8 FRI M818

*Taxes, Fees and Port Expenses of up to HK\$624 are additional and subject to change. See page 12 for more details.

Southern Islands

Roundtrip from Tokyo

8 days



Tokyo (Yokohama) > Okinawa > Ishigaki > Taipei (Keelung) > Tokyo (Yokohama)

Interior fares from*	Balcony fares from*	Mini-Suite fares from*	Club Class fares from*	Suite fares from*
HK\$12,161	HK\$18,713	HK\$22,223	HK\$28,619	HK\$42,113

2018 DEPARTURES | *Diamond Princess*[®]
 Jul 19 THU M824

Taxes, Fees and Port Expenses of up to HK\$819 are additional and subject to change. See page 12 for more details.

Japan & Taiwan

Roundtrip from Tokyo

8 days



Tokyo (Yokohama) > Nagoya > Osaka > Okinawa > Taipei (Keelung) > Tokyo (Yokohama)

Interior fares from*	Balcony fares from*	Mini-Suite fares from*	Club Class fares from*	Suite fares from*
HK\$8,518	HK\$14,718	HK\$18,205	HK\$23,398	HK\$35,643

2018 DEPARTURES | *Diamond Princess*[®]
 Nov 5 MON M839N | Nov 21 WED M840N
 Nov 13 TUE M839N | Nov 29 THU M841N

Taxes, Fees and Port Expenses of up to HK\$737 are additional and subject to change. See page 12 for more details.

southeast asia & japan

A single effortless voyage encompasses the highlights of Japan and Southeast Asia from the tranquil emerald islands of Vietnam's Halong Bay, a UNESCO World Heritage Site, to the energetic streets of Hong Kong, Taipei and beyond.

China, Taiwan & Vietnam

Roundtrip from Tokyo

15 days

more ashore

Itinerary: Tokyo (Yokohama) > Kagoshima > Xiamen > Da Nang/Hue (Chan May) > Halong Bay/Hanoi (Cai Lan) > Hong Kong **LATE NIGHT** > Taipei (Keelung) > Okinawa **LATE NIGHT** > Tokyo (Yokohama)

Interior fares from*	Balcony fares from*	Mini-Suite fares from*	Club Class fares from*	Suite fares from*
HK\$19,181	HK\$29,945	HK\$36,419	HK\$46,949	HK\$69,413

2018 DEPARTURE | *Diamond Princess*[®]
Oct 16 TUE M836

*Taxes, Fees and Port Expenses of up to HK\$1,053 are additional and subject to change. See page 12 for more details.

beauty

In northern Vietnam lies Halong Bay, a vision of ethereal beauty. Some 1,600 islands and islets make up this UNESCO World Heritage Site.

temples

Perhaps nothing is more symbolic of Kyoto than Kinkaku-ji's golden reflection shimmering across the pond before it. The temple's grounds were built to illustrate the harmony between heaven and earth.

more ashore

Southeast Asia & Japan

Roundtrip from Tokyo

23 days

more ashore

Itinerary: Tokyo (Yokohama) > Toba > Osaka (for Kyoto) > Iwakuni **LATE NIGHT** > Kanmon Straits scenic cruising > Hakata (Fukuoka) > Busan > Kanmon Straits scenic cruising > Nagoya > Tokyo (Yokohama) > Kagoshima > Xiamen > Da Nang/Hue (Chan May) > Halong Bay/Hanoi (Cai Lan) > Hong Kong **LATE NIGHT** > Taipei (Keelung) > Okinawa **LATE NIGHT** > Tokyo (Yokohama)

Interior fares from*	Balcony fares from*	Mini-Suite fares from*	Club Class fares from*	Suite fares from*
HK\$29,321	HK\$46,247	HK\$56,153	HK\$72,689	HK\$106,853

2018 DEPARTURE | *Diamond Princess*[®]
Oct 8 MON M835A

*Taxes, Fees and Port Expenses of up to HK\$1,911 are additional and subject to change. See page 12 for more details.

more ashore See the sights during the day and experience the nightlife after dark with Late Night (9pm or later) calls.

golden week & getaway cruises

Discovering Japan during Golden Week, offers a unique opportunity to observe the country's celebrations. During this time, several national holidays are celebrated, including Greenery Day and Children's Day. Or if you only have time for a shorter vacation, consider a Getaway that takes you to iconic ports in Japan and Korea.

Golden Week Explorer

Roundtrip from Kobe

11 days

more ashore

Kobe > Busan **LATE NIGHT** > Kobe > Kochi > Hiroshima > Miyazaki (Aburatsu) > Kagoshima > Busan **LATE NIGHT** > Kanmon Straits scenic cruising > Kobe

Interior fares from*	Balcony fares from*	Mini-Suite fares from*	Club Class fares from*	Suite fares from*
HK\$15,047	HK\$24,329	HK\$33,611	HK\$43,517	HK\$60,833

2018 DEPARTURE | *Diamond Princess*[®]
May 2 WED M812A

*Taxes, Fees and Port Expenses of up to HK\$1,053 are additional and subject to change. See page 12 for more details.



Korea & Japan Getaways			4/5 days	
DAYS	ITINERARY	PORTS*	SHIP	2018 DATES
4	Golden Week Korea	Tokyo (Yokohama) > Kanmon Straits scenic cruising > Busan > Kanmon Straits scenic cruising > Kobe	<i>Diamond Princess</i> [®]	Apr 28 M811, May 2* M812
5	Korea & Japan	Kobe > Kochi > Kagoshima > Busan > Kanmon Straits scenic cruising > Kobe	<i>Diamond Princess</i> [®]	Jun 3 M817, Jun 15† M819
5	Korea & Japan	Tokyo (Yokohama) > Kanmon Straits scenic cruising > Busan > Kanmon Straits scenic cruising > Yokkaichi > Tokyo (Yokohama)	<i>Diamond Princess</i> [®]	Jun 20 M820, Aug 22 M828, Sep 12 M831, Oct 3 M834, Oct 31 M837, Dec 1 M841

*Ports of embarkation and disembarkation are in bold.
 †Sailing is roundtrip Kobe and omits Kanmon Straits scenic cruising.
 ‡Sailing is from Kobe to Tokyo (Yokohama) and does not call at Kochi.

tranquility

Haedong Yonggungsa Temple is a stunning attraction located on Busan's shoreline. While most temples in Korea are located in the mountains, this temple offers the calming sound of ocean waves as a backdrop.



more ashore

See the sights during the day and experience the nightlife after dark with Late Night (9pm or later) calls.

cruisetours

Japan's cultural treasures and spectacular scenic wonders come to life during two unforgettable itineraries that combine a multiple-night land tour with your cruise. Our Highlights of Japan cruisetour visits popular cities such as Kyoto and Tokyo, while Temples & Traditions immerses you in Japan's rich history.



Highlights of Japan Cruisetour

tour **3**

13, 14, 16
or **20** nights

2 nights Kyoto, Japan > 3 nights Tokyo, Japan > 8-day Sea of Japan cruise, 8-day Circle Japan cruise, 8-day Circle Hokkaido cruise, 11-day Circle Japan cruise, 15-day China, Taiwan and Vietnam cruise, 9-day Sea of Japan cruise or 9-day Southern Islands cruise

Interior fares from*	Balcony fares from*	Mini-Suite fares from*	Club Class fares from*	Suite fares from*
HK\$31,973	HK\$38,213	HK\$47,573	HK\$41,567	HK\$59,273

2018 DEPARTURES

Diamond Princess[®]

Jun 28 TOUR 3A	Aug 30 TOUR 3A
Jul 6 TOUR 3A	Sep 12 TOUR 3A
Jul 30 TOUR 3B	Sep 20 TOUR 3A
Aug 22 TOUR 3A	Oct 11 TOUR 3C

Tour 3A includes 8-day Sea of Japan cruise, 8-day Circle Japan cruise or 8-day Circle Hokkaido cruise. Tour 3B includes 11-day Circle Japan with Nebuta & Summer Festivals cruise. Tour 3C includes 15-day China, Taiwan and Vietnam cruise.
*Fares based on 6/28/18 sailing. Fares for other dates may vary. Taxes, Fees and Port Expenses of up to HK\$1,092 are additional and subject to change. See below for more details.

Temples & Traditions Cruisetour

tour **4**

15 or 18 nights

2 nights Kyoto, Japan > 2 nights Kanazawa, Japan > 3 nights Tokyo, Japan > 8-day Circle Japan cruise, 8-day Circle Hokkaido cruise or 11-day Circle Japan with Nebuta & Summer Festivals cruise

Interior fares from*	Balcony fares from*	Mini-Suite fares from*	Club Class fares from*	Suite fares from*
HK\$46,403	HK\$52,565	HK\$55,997	HK\$62,003	HK\$73,703

2018 DEPARTURES

Diamond Princess[®]

Jun 26 TOUR 4A	Aug 20 TOUR 4A	Sep 18 TOUR 4A
Jul 28 TOUR 4B	Aug 28 TOUR 4A	

Tour 4A includes 8-day Circle Japan cruise or 8-day Circle Hokkaido cruise. Tour 4B includes 11-day Circle Japan with Nebuta & Summer Festivals cruise.
*Fares based on 6/26/18 sailing. Taxes, Fees and Port Expenses of up to HK\$1,053 are additional and subject to change. See below for more details.

*Lead-in fares are based on the lowest category stateroom for each category type. Launch Fares represent the lead-in introductory fares and are subject to change. Launch Fares and other amounts are in HK dollars unless stated otherwise. Rates shown are per person, cruise or cruisetour only, based on double occupancy and do not apply to singles or third- and fourth-berth guests; contact Princess Cruises for third- and fourth-berth guest fares. Refer to princess.com for information and fares for oceanview cabins. This offer is based on space availability, is capacity controlled and applies to the sailing dates and stateroom categories shown on each itinerary. Fares may remain at a discounted level after this promotion. See princess.com for terms, conditions and definitions that apply to all bookings.



shore excursions

Princess carefully crafts immersive shore excursions so you can experience the true colors, cultures and flavors of Japan. Led by reputable operators with local expertise, our excursions come with the assurance of a guaranteed return to ship. From partaking in a tea ceremony to exploring ancient temples, there's truly something for everyone. And for small groups, we can customize tours based on personal preferences.

HAKADOTE

MT. HAKODATE & MOTOMACHI DISTRICT

Start the day at Hakodate's Morning Market, where vendors offer fresh fish as well as salmon roe, scallops, crab and sea urchin from the cold waters of Hokkaido. Continue to the Mt. Hakodate Ropeway — actually an aerial tram, perhaps the busiest tram in all Japan. Your tram ride travels nearly half a mile to the summit for sweeping views of the harbor and the city. Set at the foot of Mt. Hakodate, the Motomachi District is where foreigners settled after the city was opened to the West in 1854. Enjoy some free time to explore on your own.



HUALIEN, TAIWAN

BEST OF TAROKO GORGE NATIONAL PARK

This astounding 12-mile-long canyon is a breathtaking spectacle of everything from rugged coastal cliffs to subtropical scenery and coniferous forests. Visit the highlights of the park, including Eternal Spring Shrine, Swallow's Grotto, the Tunnels of Nine Turns and the Marble Bridge.



OKINAWA

SHURIJO CASTLE, GYOKUSENDO CAVE & OKINAWA WORLD CULTURAL VILLAGE

Just minutes away from the pier is majestic Shurijo Castle, a UNESCO World Heritage Site. Marvel at the lavish interior décor and a striking red color that is unique to Shurijo Castle, giving you a taste of the original splendor which surrounded the Ryukyu kings. From here, it's on to the unique Okinawa World, a theme park centered on Okinawan culture and history. A cheerful conclusion to your day awaits at an Awamori distilled spirits brewery.



TOKYO

MT. FUJI & HAKONE NATIONAL PARK

Enjoy a scenic drive to Japan's famed Hakone National Park, a wonderland of forests, mountains and hot springs. Upon arriving, you'll board an aerial gondola for a ropeway journey to Owakudani Valley Station. En route, you'll be awestruck by the breathtaking views of Hakone Park and Owakudani Valley's thermal springs. End the excursion with a cruise across Lake Ashi, a mountain lake created by volcanic activity, complete with views of Mt. Fuji.



OSAKA

KYOTO & NARA

Travel via motorcoach to Nara where you'll visit the Todai-Ji Temple, home to the world's largest bronze Buddha statue. Also see the Kasuga Taisha Shrine before heading to Kyoto, where you'll marvel at the breathtaking Golden Pavilion and the magnificent garden surrounding the temple. Your last stop is Kiyomizu-dera Temple, which offers panoramic views of the city atop a stunning hillside.



BUSAN, SOUTH KOREA

TEA CEREMONY & CITY DRIVE

Take in the views of Busan during a drive through the commercial district. Also visit the Busan Tower, which boasts panoramic views of the city. Beomeosa Temple or Geumgangsasa Temple will be your first stop of the day. After exploring the serene temple grounds, take part in an ancient tea ceremony. Learn the rituals and rules of this important tradition before enjoying green tea and Korean rice cakes with your hosts.



OSAKA

HIGHLIGHTS OF OSAKA

Your adventure begins as you board your motorcoach and set out on an excursion through Osaka, Japan's third-largest city. Journey to Osaka's most famous landmark — Osaka Castle. Walk up to the top of the castle to the observation deck and enjoy 360-degree views of the city. Also visit the Sumiyoshi Shrine, which enshrines three gods that are believed to offer protection for sailors and to bring prosperity.



welcome aboard



One of the most wonderful things about a Princess® cruise is that every day on board is a new horizon of possibility. And you've got nothing but time to enjoy all the ship's inviting and relaxing venues, fun-filled activities and engaging

entertainment options. Or to curl up by the pool with a book and do nothing at all. After the activities of the day are done, it's time for an evening of excitement. And what a night it is — with myriad options for making wonderful memories.



PREPARE TO BE DAZZLED

From music and comedy to musicians, street entertainers, Broadway-style shows and disco deck parties, entertainment beckons from every corner! You'll marvel at dazzling stage sets, performers from around the globe and so much more.

princess.com/onboard

YOUTH & TEEN CENTERS

Your young explorers can play, discover and have fun in new ways when they sail with us! Together with Discovery,™ we've developed engaging new youth experiences and themed centers specially designed for kids and teens, rolling out fleetwide through 2019. There's something for the whole family on your Princess voyage!

princess.com/family



SHOPPING

Do a bit of shopping in The Shops of Princess — you'll find top name brands, like Coach, Swarovski, Lancôme and Chanel, plus fine jewelry from Effy and luxury watch brands including OMEGA and TAG Heuer. Also purchase fine spirits and Princess logo merchandise — all available at tax- and duty-free savings.

princess.com/theshops

VEGAS-STYLE CASINO

Feeling lucky? Join the excitement and energy in the casino, where you can try your hand at slots, blackjack, poker, roulette, craps and other games of chance.

EXPERIENCE THE CULTURE

On board, delight in the 400-year-old tradition of comic storytelling known as "rakugo," savor fresh sushi, noodle stations and Japanese whiskies and witness an evening of traditional music and dance.

ENCOUNTERS WITH DISCOVERY AT SEA™

Enrichment speakers will inspire you with the culture and history of this amazing destination. Gain insights into the events from years past that shape the world today.

MOVIES UNDER THE STARS®

Find a spot poolside — don't forget the complimentary popcorn — for a feature film, sensational concert, sporting event and more, all on a giant screen. Even watch Japanese-inspired films!

TAKE YOUR PICK WITH SPECIALTY DINING

Transport yourself to the romance of Italy at Sabatini'sSM Italian Trattoria, serving signature pastas and seafood specialties inspired by the iconic flavors and culinary traditions of Italy. Or at Sterling Steakhouse,SM sink your teeth into fine aged steaks and flavorful chops.

princess.com/dining



A CASUAL AFFAIR

While on deck enjoy complimentary treats like Neopolitan-style pizza, deemed the "Best Pizza at Sea" by *USA TODAY*, and top it off with soft serve ice cream. Or in the Piazza, stop by the International Café to satisfy your cravings with a menu that changes throughout the day — from grilled paninis to freshly baked cookies. At the Horizon Court, delight in creating your own specialty salad, building your own custom sandwich or grabbing a quick rice bowl.



LOCAL EATS

Enjoy the authentic flavors of Japan on board! Indulge in delicious noodle specialties at Horizon Court or freshly prepared sushi. Sample spirited drinks such as fine Japanese whiskies, sake and shochu.



KAI SUSHI

Enjoy delicacies from the sea at our exquisitely decorated traditional sushi bar, serving up sushi and sashimi expertly prepared before your eyes. Dine at the sushi bar or enjoy an elegant restaurant experience. Available on *Diamond Princess*.[®]

CHOCOLATE JOURNEYS

You'll find plenty of ways to satisfy your chocolate craving including confections from master chocolatier Norman Love. Discover Chef Love's sinfully delicious signature desserts in our main dining rooms, plus exquisite breakfast pastries and evening cakes in the Horizon Court.

princess.com/chocolate





THE ULTIMATE SLEEP AT SEA

Together with board-certified sleep expert, Dr. Michael Breus, and HGTV design star Candice Olson, we've developed the new Princess Luxury Bed using the latest in sleep science and technology. Stretch out on this marvel of comfort and design with a European-inspired duvet and Jacquard-woven cotton linens. princess.com/sleep



THE SANCTUARY

A lovely on-deck oasis away from the bustle of the ship, The Sanctuary offers adults the chance to relax and unwind. Serenity Stewards take care of you with chilled face towels, and light snacks and beverages, while you settle into a plush lounge chair or head to a private cabana for an al fresco massage.



LOTUS SPA®

In the award-winning Lotus Spa, named "Best Spa on a Cruise Ship" by *Spafinder Wellness 365*™, you can spoil yourself with a variety of wonderful treatments. Perhaps you'll choose an aroma stone therapy massage or detoxifying ocean wrap, or plan an entire day of personalized pampering. princess.com/wellness



IZUMI JAPANESE BATH

Izumi, modeled after a traditional Japanese bath or "onsen," features indoor and outdoor Japanese bathing experiences, including steam rooms, saunas, and hot tubs with spectacular ocean views. Exclusively on Diamond Princess®, it is the largest Japanese bath of its kind at sea and offers guests a chance to experience a popular Japanese pastime.

at home, away from home

Enhance your voyage with some of the most incredible accommodations at sea. At the end of each day's adventures ashore in Japan, we want you to feel welcomed home. With a variety of tastefully appointed stateroom and suite options offering wonderful amenities and trademark attentive service from our friendly staff who knows what hospitality means, you'll find your Princess ship is truly your home away from home.

all Princess staterooms feature:

- Comfortable queen or two twin beds
- Refrigerator
- Complimentary 24-hour room service^{^^}
- Flat-panel television
- Private bathroom with shower
- 100% cotton, high-thread count linens
- Spacious closet
- Desk
- Hair dryer & fine bathroom amenities
- Digital security safe



SUITE WITH BALCONY

Includes all the fine amenities of a spacious Club Class Mini-Suite plus:

- Bathroom tub and separate shower
- 2 floor-to-ceiling glass doors
- Separate sitting area with sofa bed, chair and 2 tables
- One complimentary mini-bar setup[‡]
- Spacious walk-in closet
- Upgraded bathroom amenities
- Complimentary use of the Lotus Spa[®] Thermal Suite[†]
- Laundry and professional cleaning services
- Complimentary dinner in a specialty restaurant on embarkation day^{**}
- Priority specialty dining and shore excursion reservations
- Priority disembarkation at tender port

princess.com/suites



CLUB CLASS MINI-SUITES

Includes all the standard Mini-Suite amenities, plus exclusive VIP touches:

- Our very best located mini-suites

CLUB CLASS DINING:*

- Exclusive area of the Main Dining Room
- Expedited seating with no wait
- Expanded menu options
- Dedicated wait staff

UPGRADED AMENITIES & SERVICES:

- The Princess Luxury Bed
- Priority specialty dining reservations
- Priority embarkation and debarkation at the beginning and end of your cruise
- One-time complimentary wine set-up[^]
- Evening canapés, upon request
- Upgraded terry shawl bathrobes

princess.com/clubclass



MINI-SUITE WITH BALCONY

All the fine amenities of a Balcony Stateroom plus:

- Luxury balcony furniture
- Balcony with 2 to 4 chairs, table and ottoman
- Bathroom tub and massage shower head
- Floor-to-ceiling sliding glass doors
- Separate sitting area
- Welcome glass of Champagne[‡]
- Sofa bed
- Luxury mattress topper and pillows
- Two flat-panel televisions

VACATIONING WITH EXTENDED FRIENDS OR FAMILY?

Princess offers Two Bedroom Family Suites and interconnecting staterooms!

Call us for more details.



BALCONY

A front-row seat for spectacular scenery on your cruise with a floor-to-ceiling sliding glass door.



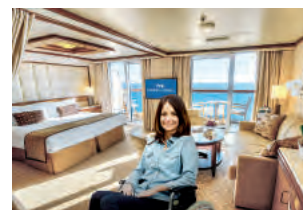
OCEANVIEW

Includes all our standard Princess amenities, with a broad picture window to bring in light and views.



INTERIOR

Our most affordable option, the interior stateroom features two twin beds that make up into a queen-size bed.



WHEELCHAIR-ACCESSIBLE

Full wheelchair-turning space, roll-in shower with grab bars and fold-down seat, easy-access closet and accessible writing desk. Details at princess.com

diamond princess®

Sail Japan on the exquisite Diamond Princess®. Indulge in tranquil relaxation at Izumi Japanese Bath or savor fresh fish at Kai Sushi, both exclusive to this ship. Whether you love activity or crave tranquility, we offer an array of signature engaging activities, exciting entertainment, and fresh, delicious cuisine — everything you need to relax, enjoy your vacation and come back new.®



	Diamond Princess®
Guests	2,670
Balconies	Over 700
Theater	✓
Movies Under the Stars® (poolside theater)	✓
The Sanctuary (relaxing retreat for adults)	✓
Lotus Spa® & Fitness Center	✓
Italian-inspired Piazza	✓
Izumi Japanese Bath	✓
Casino	✓
Sabatini's SM Italian Trattoria (specialty restaurant)	✓
Sterling Steakhouse SM (specialty restaurant)	✓
Vines (wine & seafood bar)	✓
Kai Sushi (specialty restaurant)	✓

Note: Amenities represent typical arrangements and may vary by ship. Certain stateroom categories may vary in size and configuration by ship. Stateroom views are considered unobstructed unless noted otherwise. Some categories have portholes versus picture windows. Some staterooms are partially to fully obstructed, as shown on deck plans. Obstructions do not include certain nautical items like handrails, dividers or ship hardware. For balcony staterooms, the view is determined from the perspective of the balcony railing. Balconies may have either solid steel or glass railings. Upper berth and bed ladder capacities are 250 lbs. Staterooms that can accommodate rollaways have two lower berths and one upper berth, and the staterooms can accommodate a fourth berth as a rollaway bed upon request at time of reservation. There are a limited number of rollaway beds per ship, per voyage. Use of rollaway beds restricts cabin space. Call (852) 2952 8088 for more information. *Open for breakfast and dinner daily as well as lunch on sea days. †Includes ½ bottle of red wine and ½ bottle of white wine on embarkation day. **Charges apply for pizza delivery and beverages. Subject to change. ‡On select ships. Thermal Suite is not available on Royal Princess®, Regal Princess®, Majestic Princess®, Golden Princess®, Grand Princess®, Pacific Princess®, Dawn Princess®, Sun Princess® and Sea Princess®. **Applicable on cruises six days or longer. ‡Complimentary mini-bar setup is one-time only per stateroom for guests 21 and over. Welcome glass of Champagne is for guests 21 and over.

Japan — what you need to know

Can I visit without knowing the language?

Absolutely. English is spoken on board and on shore excursions. Signage and information in many Japanese cities are in English, and many Japanese speak the language.

What about dealing with local currency?

No worries — onboard charges are priced in U.S. dollars, and a currency exchange is available on your ship.

Is it safe?

For over 50 years, Princess has safely taken guests to some of the most exotic places on the planet. Our commitment to guest and crew safety comes first. Always has, always will.

How can I maximize my time in Japan?

We craft each cruise to highlight the best of that region. With Princess More Ashore you can enjoy more time in port with a Late Night stay (9pm or later).

What's special about these ports?

Ancient temples, vibrant festivals, healing hot springs — each port is full of wonders to discover, and shore excursions explore them all. Many visit UNESCO World Heritage Sites, places identified as being of exceptional importance.

What if I don't like the local cuisine?

When dining on board, you get the best of both worlds — delicious regional dishes and familiar favorites you'll love. Each port offers world-famous culinary fare.

What about U.S. voltage outlets and hair dryers?

Your ship and stateroom come equipped with U.S. voltage outlets for chargers and other devices. There is also a safety-tested hair dryer in every stateroom.

Diamond Princess®

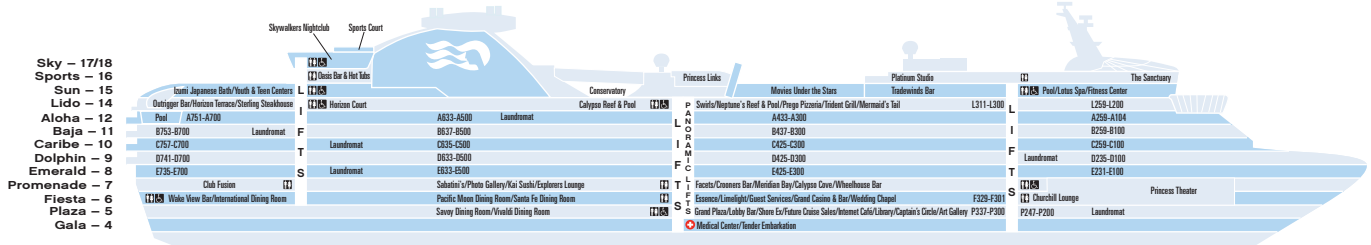
Guest Capacity: 2,706

Length: 952 ft.

Gross Tonnage: 115,875

Inaugural Cruise: March 13, 2004 (Refurbishment: March 2017)

Christened by: Yoshiko Tsukuda, (wife of Kazuo Tsukuda, president of Mitsubishi Heavy Industries)



← Aft

Forward →

Sky 17/18

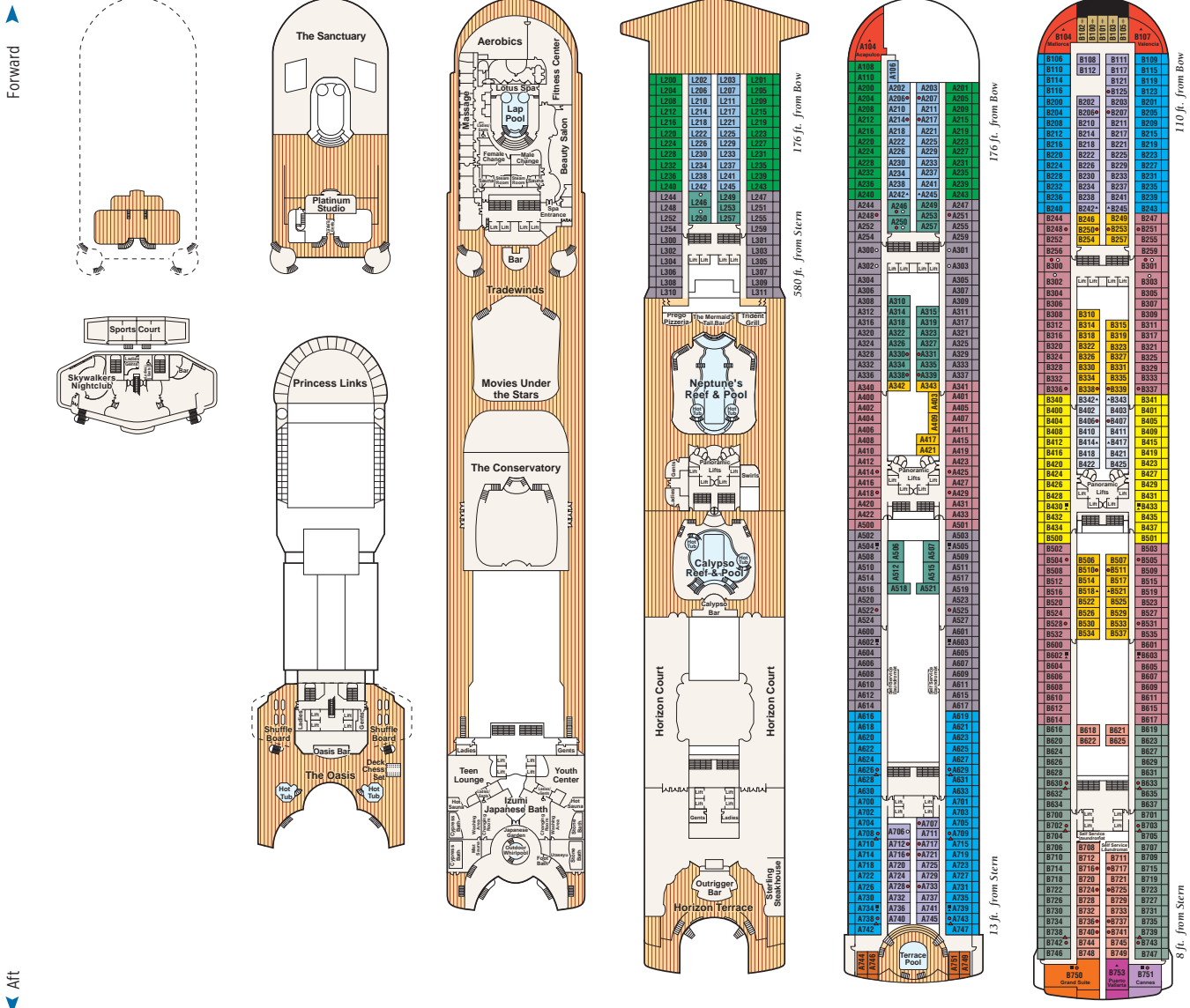
Sports 16

Sun 15

Lido 14

Aloha 12

Baja 11



← Aft

Forward →

Stateroom Description

SUITE

- S1** Grand suite Aft (Baja)
- S2** Owner's suite Aft (Baja)
- S3** Penthouse suite Aft (Baja, Caribe)
- S4** Penthouse suite Mid-ship (Caribe)
- S5** Premium suite Forward (Aloha, Baja, Caribe)
- S6** Vista suite Aft (Caribe, Dolphin, Emerald)
- S8** Family suite interconnecting staterooms Forward (Dolphin)

CLUB CLASS MINI-SUITE

- M1** Premium Mid-ship (Dolphin)

MINI-SUITE

- MB** Mid-forward, Mid-aft (Dolphin)
- MD** Aft (Dolphin)
- ME** Forward (Dolphin), Aft (Emerald)

BALCONY

- B2** Premium Mid-forward, Mid-aft (Caribe)
- B4** Premium Aft (Aloha, Caribe, Dolphin, Emerald)
- BA** Mid-ship (Baja)
- BB** Mid-forward, Mid-aft (Baja), Mid-ship (Aloha)
- BC** Mid-forward, Mid-aft (Lido, Aloha)
- BD** Aft (Baja, Caribe)
- BE** Forward (Baja, Caribe), Aft (Aloha)
- BF** Forward (Lido, Aloha)

OCEANVIEW

- O5** Premium Forward (Baja, Caribe)
- OC** Mid-forward (Plaza)
- OF** Forward (Emerald, Plaza)
- OV** Obstructed view Mid-ship (Emerald)

OCEANVIEW (CONT.)

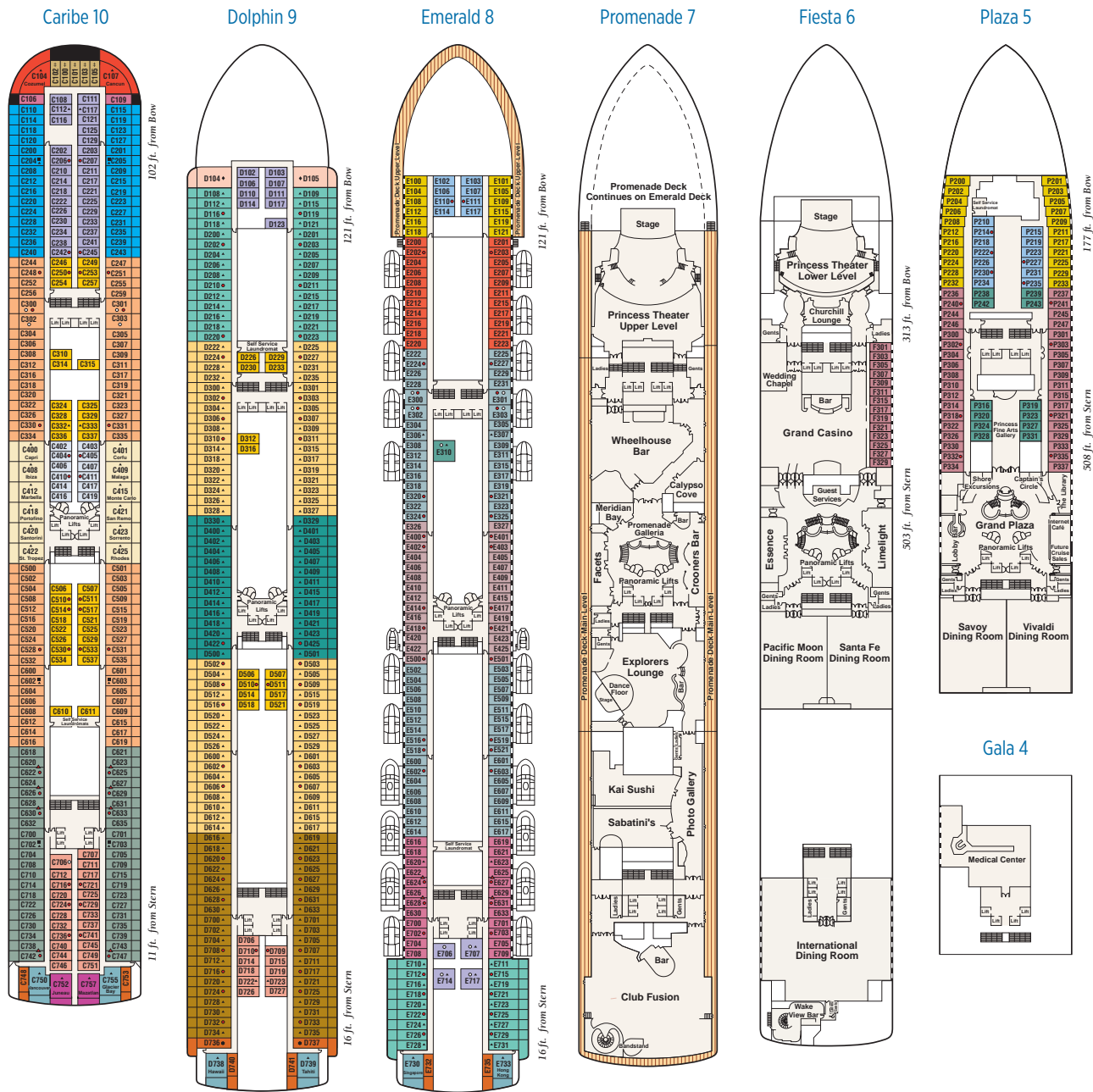
- OW** Obstructed view Mid-forward, Mid-aft (Emerald)
- OY** Obstructed view Forward (Caribe), Aft (Emerald)
- OZ** Obstructed view Forward (Emerald)

INTERIOR

- IA** Mid-ship (Baja, Caribe)
- IB** Mid-forward, Mid-aft (Baja, Caribe, Dolphin), Mid-ship (Aloha)
- IC** Mid-forward, Mid-aft (Lido, Aloha, Emerald, Plaza)
- ID** Aft (Baja, Caribe, Dolphin)
- IE** Forward (Baja, Caribe, Dolphin), Aft (Aloha, Emerald)
- IF** Forward (Lido, Aloha, Emerald, Plaza)

- ♦ Family suites D104/D100 and D105/D101: Interconnecting staterooms with private balcony; accommodate up to six persons (D100 and D101 not shown separately)
- ◊ Wheelchair-accessible stateroom; shower only
- Will accommodate third and fourth person
- ▲ Will accommodate third person
- * Connecting staterooms
- * Two lower beds not convertible to queen; shower only
- Will accommodate a rollaway
- ‡ Balcony access when in port only

Note: Some areas of the ship are not accessible to wheelchairs and scooters. Distances shown are from the bow (forward) or stern (aft) to the nearest stateroom. Stateroom views are considered unobstructed unless noted otherwise. Obstructions do not include certain nautical items like handrails, dividers or ship hardware. For balcony staterooms, the view is determined from the perspective of the balcony railing. Balconies may have either solid steel or toughened glass railing. Call (852) 2952 8088 for more information.



Forward

Aft

EVEN THE EXPERTS SAY WE ARE THE EXPERTS



Book Now:



Your Travel Agent



www.princess.com



(852) 2952 8088



PRINCESS CRUISES
come back new*

Suite 1207, Tower 1, The Gateway, Harbour City,
25 Canton Road, Tsim Sha Tsui, Kowloon
License No. 353772



HONG KONG RESIDENTS: Fares are shown in HK dollars.
Ask your Travel Agent or call Princess for details.

©2017, Princess Cruise Lines, Ltd. Ships of Bermudan and British registry.

YOUR PROFESSIONAL TRAVEL AGENT: